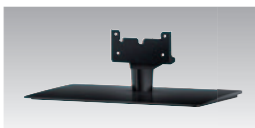


Product specification

| Model No. | TH-65LFE7 | TH-50LFE7 | TH-42LFE7 |
|--------------------------------|---|--|--|
| DISPLAY | | | |
| Screen Size | 65-inch (1,639 mm) | 50-inch (1,270 mm) | 42-inch (1,065 mm) |
| Panel Type | LCD VA Panel/E-LED | LCD VA Panel/E-LED | LCD IPS Panel/D-LED |
| Aspect Ratio | 16:9 | 16:9 | 16:9 |
| Effective Display Area (W x H) | 1,429 x 804 mm (56.3" x 31.7") | 1,096 x 616 mm (43.2" x 24.3") | 928 x 522 mm (36.6" x 20.6") |
| Number of Pixels (H x V) | 1,920 x 1,080 pixels | 1,920 x 1,080 pixels | 1,920 x 1,080 pixels |
| Brightness | 350 cd/m ² | 350 cd/m ² | 350 cd/m ² |
| Contrast Ratio | 5,000:1 | 5,000:1 | 1,200:1 |
| Response Time | 6.5 ms (G to G) | 9.5 ms (G to G) | 8.0 ms (G to G) |
| Viewing Angle | 176°/176° | 176°/176° | 178°/178° |
| Panel Surface Treatment | Anti-glare treatment | | |
| CONNECTION TERMINAL | | | |
| HDMI In | HDMI Type A Connector x 2 | | |
| DVI-D In/Audio In (L/R) | DVI-D 24-pin x 1/Stereo Mini Jack (M3) x 1 (Shared with PC In) | | |
| PC In/Audio In (L/R) | Mini D-sub 15-pin x 1/Stereo Mini Jack (M3) x 1 (Shared with DVI-D In) | | |
| 5V Charge Out | 5 V 500 mA (Max) | | |
| CONTROL | | | |
| Serial | D-sub 9-pin x 1, RS-232C Compatible | | |
| LAN | RJ45 x 1 10 BASE-T/100BASE-TX, Compatible with PLink™ | | |
| IR In/Out | Stereo Mini Jack (M3) x 1 / x 1 | | |
| AUDIO | | | |
| Audio Out | Stereo Mini Jack (M3) x 1 | | |
| Built-in Speaker | 20 W [10 W + 10 W] (10% THD) | | |
| ELECTRICAL | | | |
| Power Requirements | 110-127/220-240 V AC, 50/60 Hz | | |
| Power Consumption | 135 W | 95 W | 95 W |
| Power off Condition | 0.4 W | 0.4 W | 0.4 W |
| Stand-by Condition | 0.5 W | 0.5 W | 0.5 W |
| MECHANICAL | | | |
| Dimensions (W x H x D) | 1,458 x 840 x 52 mm (57.4" x 33.1" x 2.1") | 1,126 x 652 x 53 mm (44.4" x 25.7" x 2.1") | 963 x 566 x 77 mm (38.0" x 22.3" x 3.1") |
| Bezel Width | 10.8 mm (0.5") (L/R/T), 17.9 mm (0.7") (B) | 11.9 mm (0.5") (L/R/T), 17.7 mm (0.7") (B) | 12.5 mm (0.5") (L/R/T), 22.1 mm (0.9") (B) |
| Weight | Approx. 33.5 kg (73.9 lbs.) | Approx. 14.5 kg (32.0 lbs.) | Approx. 9.5 kg (21.0 lbs.) |
| Pitch of Wall-hanging | VESA Compliant 400 x 400 mm (15.8" x 15.8") | VESA Compliant 400 x 200 mm (15.8" x 7.9") | VESA Compliant 200 x 200 mm (7.9" x 7.9") |
| ENVIRONMENTAL | | | |
| Operating Environment | Temperature: 0°C to 40 °C (32 °F to 104 °F) / Humidity: 20 % to 80 % (Non Condensation) | | |

Optional Accessory

Pedestal **TY-ST65PE7**
(For 65-inch model)



TY-ST42PE7
(For 50, 42-inch model)



Early Warning Software
ET-SWA100

Panasonic

Weights and dimensions shown are approximate. Specifications and appearance are subject to change without notice. Product availability differs depending on region and country. This product may be subject to export control regulations. The PLink trademark is an application trademark in Japan, the United States, and other countries and regions or registered trademarks. HDMI, the HDMI logo, and High-Definition Multimedia Interface are trademarks or registered trademarks of HDMI Licensing LLC in the United States and other countries. Crestron Connected™ is a trademark of Crestron Electronics, Inc. All other trademarks are the property of their respective trademark owners. Images on screen are simulated. © 2014 Panasonic Corporation. All rights reserved.



For more information about Panasonic Professional Displays, please visit:
Professional Display Global Website - panasonic.net/prodisplays
YouTube - www.youtube.com/PanasonicProDisplay

Feature

- Digital Zoom
- Power ON Screen Delay
- Bezel Adjustment
- 1:1 Pixel mode
- Automatic Picture Position
- Button Lock
- ECO Mode
- Input Lock
- Input Search
- Early Warning Software compatible
- Screen Saver
- PC Power Management
- HDMI Power Management
- DVI-D Power Management

Panasonic

Full HD LED Display

65-inch **TH-65LFE7**
50-inch **TH-50LFE7**
42-inch **TH-42LFE7**



Standard LED Display with a Stylish Design for Professional Use



All information included here is valid as of May 2014.

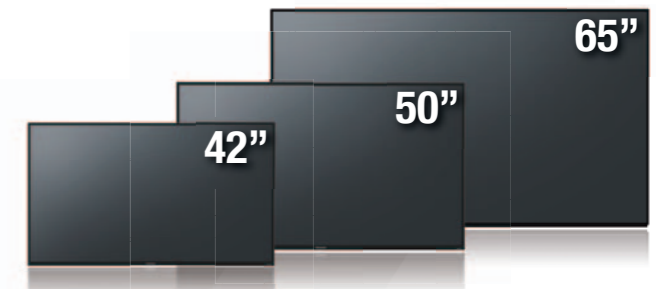
CT14-G02PF-LFE
Printed in Japan.

LED

350 cd/m²

Narrow

Portrait





LFE7 Series



| | TH-65LFE7 | TH-50LFE7 | TH-42LFE7 |
|-------------------|-----------------------|-----------|---------------|
| Screen Size | 65-inch | 50-inch | 42-inch |
| Brightness | 350 cd/m ² | | |
| Power Consumption | 135 w | 95 w | 95 w |
| Panel | LCD VA/E-LED | | LCD IPS/D-LED |
| Orientation | Landscape / Portrait | | |

Slim & Stylish

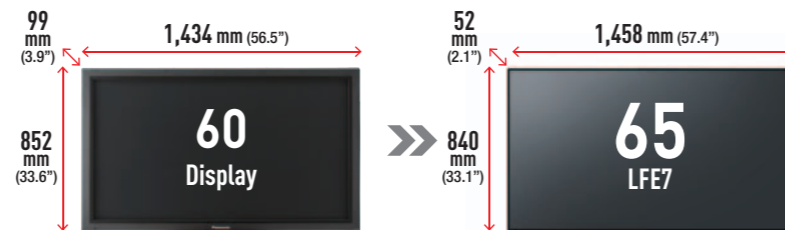
A Stylish Design for Both Signage and Conference Room Use

The narrow bezel cabinet, from which all unnecessary decorations have been eliminated, draws the viewer's attention directly to the image, for an eye-catching appearance in commercial facilities. Installation in a company conference room or reception desk also enhances the surrounding interior design to create a highly attractive space.



The TH-65LFE7 Provides a Step Up in Size for Replacing a 60-inch Model

The narrow bezel does away with all unnecessary decorations. The bezel width is slimmer than those of previous model,* and the TH-65LFE7 is about the same size as our previous 60-inch models. An existing cabinet can be used as is, while increasing the overall screen size.



*Compared with the previous 60-inch model.
*The narrow bezel of the TH-50LFE7/TH-42LFE7 allows it to save space even when it is the same screen size as a previous plasma display.

A Slim Design with Large Screen and Narrow 10.8 mm (0.5") Bezel

The TH-65LFE7 has the slim design which combines a 10.8 mm (0.5")* bezel and a depth of only 52 mm (2.1")*. There is less visual bulk, so the display seems to blend into its surroundings. This makes the image stand out even more, for greater, eye-catching visibility.

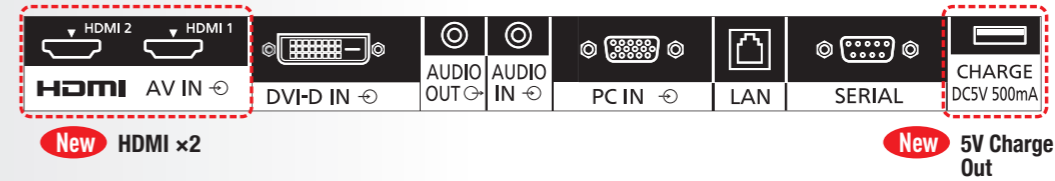


*As for the TH-65LFE7 only.
The TH-50LFE7 has an 11.9 mm (0.5") bezel (L/R/T) and a depth of 53 mm (2.1"), and the TH-42LFE7 has a 12.5 mm (0.5") bezel (L/R/T) and a depth of 77 mm (3.1").

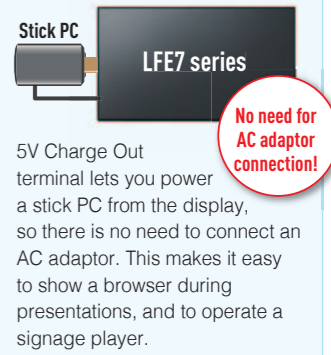
Connection Terminals for Professional Use

Versatile Input Terminals and Speakers as Standard Equipment

Input terminals (HDMI x2, DVI-D, PC-IN) and control terminals (RS-232C, LAN) are provided to meet a variety of needs for signage use. Versatile input signal compatibility also enables use as a conference monitor. Speakers complete with an equalizer are built-in for clear sound when used for videoconferences.

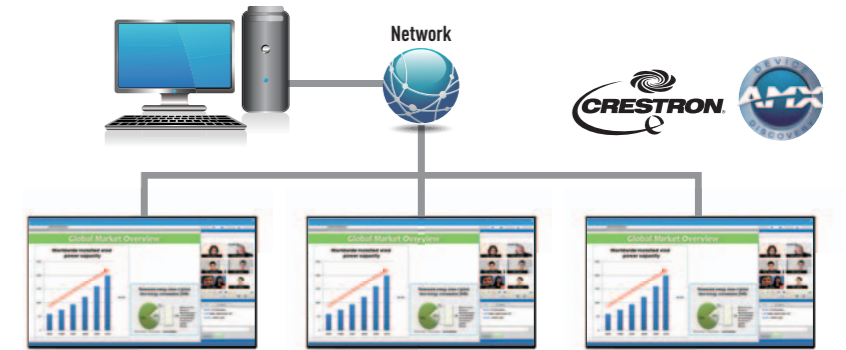


Usage Examples for New Connection Terminals



LAN Control Connection

The LFE7 Series can be controlled by LAN or RS-232C. You can configure the display into your existing control system, and you can control several devices simultaneously. It also supports AMX or Crestron Connected™ LAN control.

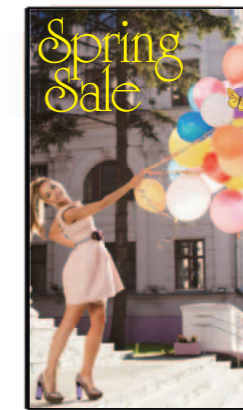


Flexible Installation

Portrait and Multi Display Configurations

The thin, lightweight LFE7 Series can be installed vertically to meet a wide range of installation needs. And a 5x5 multi display configuration is also possible, making it easy to create a video wall.

Portrait



Multi Display



• IR IN/OUT (infrared signal) Connection

When the displays are configured in a daisy connection, the input/output of their infrared signals can be simultaneously controlled with the remote control.

