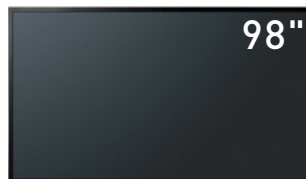


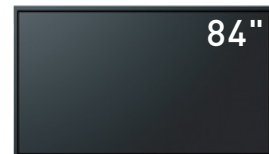
## SPECIFICATIONS (TENTATIVE)

Model no.	TH-98LQ70	TH-84LQ70
<b>DISPLAY</b>		
Screen Size (Diagonal)	98.0-inch	84.0-inch
Panel Type	IPS / D-LED	IPS / E-LED
Aspect Ratio	16:9	
Effective Display Area (W×H)	2,159×1,215 mm (85.0"×47.9")	1,861×1,047 mm (73.3"×41.3")
Number of Pixels (H×V)	3,840×2,160 pixels	3,840×2,160 pixels
Brightness (Typ)	500 cd/m <sup>2</sup>	500 cd/m <sup>2</sup>
Contrast Ratio	1,300:1	1,400:1
Response Time	8 ms	12 ms
Viewing Angle (Horizontal/Vertical)	178° / 178°	178° / 178°
<b>CONNECTION TERMINAL</b>		
HDMI In	HDMI TYPE A Connector×2 (Up to 4K@60/60Hz)*1 HDMI TYPE A Connector×2 (Up to 2K@60/60Hz)*1	
DisplayPort In	DisplayPort×1 (DP1.2a)*1	
DVI-D In / Audio In (L/R)	DVI-D 24-pin×1/Pin Jack×1 set	
PC In / Audio In (L/R)	D-sub 15-pin×1(Female)*2/Pin Jack×1 set	
Function Slot	SLOT3.0	
<b>CONTROL</b>		
Serial In / Out	D-sub 9-pin×1 / ×1, RS-232C Compatible	
LAN	RJ45×1 100BaseTX, Compatible with PLink™ (Shared with DIGITAL LINK)	
DIGITAL LINK	RJ45×1 (Shared with LAN)	
<b>AUDIO</b>		
Audio Out	Stereo Mini Jack (M3)×1	
Optical Out	Optical out×1	
Built in Speaker	20W [10W + 10W]	
<b>ELECTRICAL</b>		
Power Requirements	110V / 220-240 V AC, 50 / 60 Hz	
Power Consumption	T.B.D.	T.B.D.
<b>MECHANICAL</b>		
Dimensions (W×H×D)	2,233×1,288×122 mm (87.9"×50.7"×4.8")	1,949×1,141×99 mm (76.7"×44.9"×3.9")
Bezel Width	32.5 mm (1.3")	32.5 mm (1.3")
Weight	Approx. 140 kg (308.7 lbs.)	Approx. 100 kg (220.5 lbs.)
Protective Glass	YES	YES
<b>ENVIRONMENTAL</b>		
Operating Environment	Temperature: 0°C to 40°C (32F to 104F) / Humidity: 20% to 80% (Non condensation)	

\*1: HDCP supported, Embedded audio supported  
\*2: RGB/YPbPr switchable



TH-98LQ70



TH-84LQ70

## OPTIONAL ACCESSORIES

### Terminal Board

3G-SDI × 4 Terminal Board (w/active through x 4)  
3G-SDI × 1 Terminal Board (w/active through x 1)

### Pedestal

TY-ST103PF9 (for 98-inch model)  
TY-ST85P12 (for 84-inch model)

### Wall-hanging Bracket

TY-WK103PV9 (for 98-inch model)  
TY-WK85PV12 (for 84-inch model)

### Ceiling-hanging Bracket

TY-CE103PS10 (for 98-inch model)  
TY-CE85PS12 (for 84-inch model)

### Mobile Stand

TY-ST85PB1 (for 84-inch model)

# Panasonic®

Weights and dimensions shown are approximate. Specifications and appearance are subject to change without notice. Product availability differs depending on region and country. This product may be subject to export control regulations. All other trademarks are the property of their respective trademark owners. Images on screen are simulated. © 2014 Panasonic Corporation. All rights reserved.



For more information about Panasonic Professional Display, please visit:

Professional Display Global Website – [panasonic.net/prodisplays](http://panasonic.net/prodisplays)

YouTube – [www.youtube.com/PanasonicProDisplay](http://www.youtube.com/PanasonicProDisplay)

All information included here is valid as of April 2014.

CT14-G01-PF-LQ Printed in Japan.

# Panasonic

Preliminary

LQ Series



TH-84LQ70



TH-98LQ70

## Durable and Professional 4K Large Displays



\*Actual resolution: 3840 × 2160p



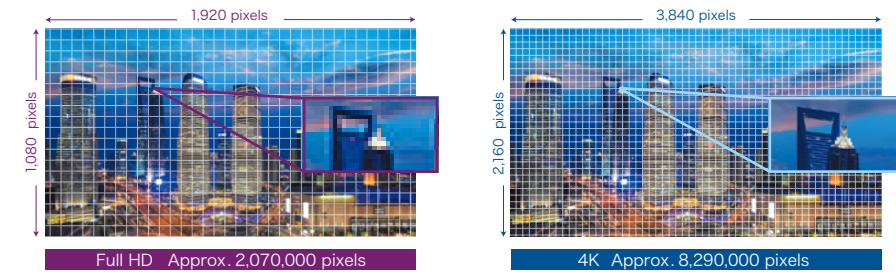
Panasonic's 4K LED displays portray bright, detailed, dynamic images on an impressively large scale, together with fine text and natural textures in crisp clarity.

In addition to a thin profile and high brightness that only an LED display could achieve, these models pursue the kind of rugged durability that is exclusive to professional displays, making them highly practical for a variety of businesses.

### Outstanding Picture Quality

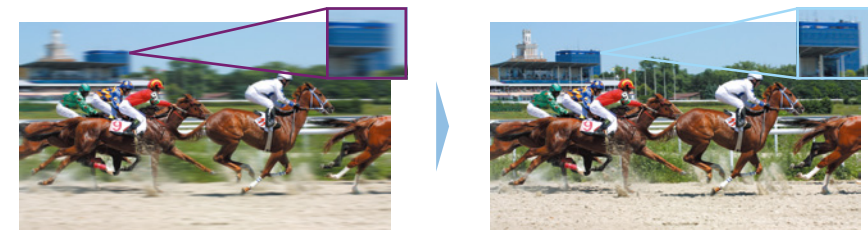
#### Delicate Panasonic 4K Images Right Down to the Details

High resolution of approximately 8,290,000 pixels, which is four times the level of Full-HD, produces highly detailed images. The dynamic, large-screen view displays intricate realism. The high-resolution screen improves visibility to raise work efficiency and enhance your image while drawing more attention from your customers.



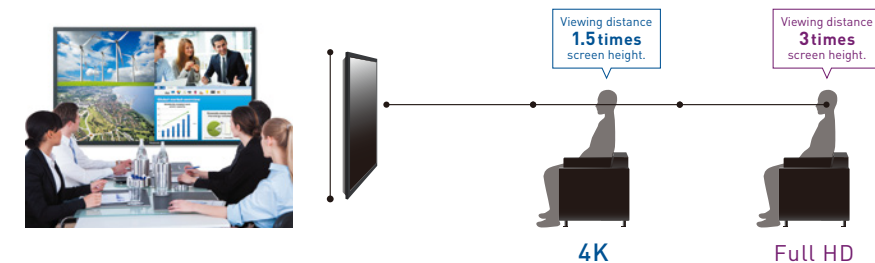
#### Non-4K Sources Are Also Beautifully Compensated

Adaptive Enhancement technology also displays Full-HD images and PC signals with extreme sharpness. It up-converts non-4K sources to a high level of image quality. Moving images, which were previously difficult to compensate, are also smooth and clear.



#### 4K Resolution Is Essential for Large-Screen Viewing

As screen sizes continue to grow, grainy images become more obvious even with Full-HD quality. This calls for the excellent resolution of 4K, which is ideal for small-to-medium size meeting rooms, commercial signage, and other displays that are commonly viewed at a close distance.



### High Reliability

#### Impact Resistance Allows Use in Public Spaces

The front of the display is provided with a protective glass pane, and the cabinet is aluminum for rugged durability. It can safely be used in public spaces where a lot of people pass by, such as commercial facilities, train/bus stations and airports.



### System Expandability

#### Ideal Replacements for Large-Screen Displays

The screw holes for the new 4K displays are in the same location as previous Panasonic large-screen plasma displays, enabling easy use of existing brackets and other installation items. Since the existing equipment can be used after replacement, you save space and reduce costs.

#### Designed for Easy Installation

Panasonic 4K displays are built to withstand vibration and impact, making them easy to transport and set up. Similar to conventional, large-screen plasma displays, eye bolts can be mounted in the installation screw holes for lifting by pulley or crane. This saves considerable work during set up.

#### New SLOT3.0 for Versatile Use

The new SLOT3.0 enables easy interface switching to match a variety of uses. A 4K interface will also be available in the future. Customizing input/output terminals and other specifications to match the application lets you easily expand business possibilities.

Professional  
4K LED Displays



### A wide range of professional applications

#### • Public Information



The high-resolution screen is ideal for fine text in airport flight displays and train schedules. Multi-window displays are also attractive.

#### • Signage



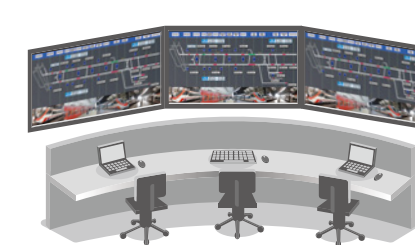
Product details and textures are clearly shown. The 4K display is ideal for capturing attention.

#### • Rentals & Staging



Great for various events. Increases excitement with beautiful images and large-screen presence.

#### • Control Rooms



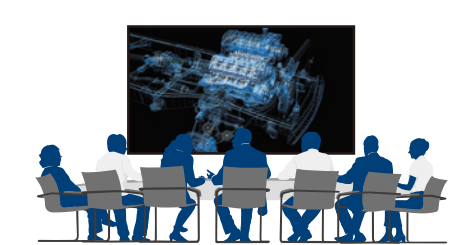
Fine images that used to be hard to see are clear. Camera images are sharp for better monitoring.

#### • Broadcast Studios



The beautiful large screen is ideal for on-camera use, great for news and information programs.

#### • Meeting Rooms



Fine text and lines, such as in construction drawings, are clearly displayed for design and production work. Presentations are also enhanced.