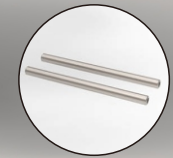
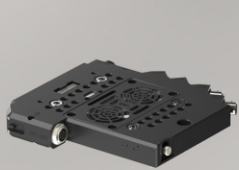


DSMC2 Studio kit

#303-2650



#206-0003-5
8" 15mm rod



#303-2601
Multi-function Plate



#303-2605
Hot Swap Plate



#303-2604
V Battery Mount



#303-2603
EVF Arm



#303-2607
Power Adaptor



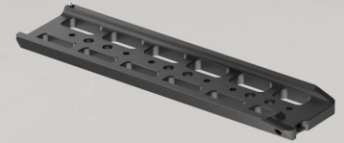
#303-2606
Side Bracket



#303-2602
Top Handle



#303-2608
Universal Quick Release BP



#303-1129
Universal LWS Dovetail Plate