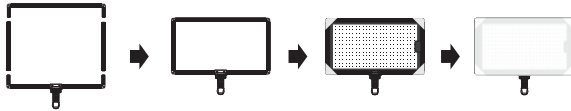
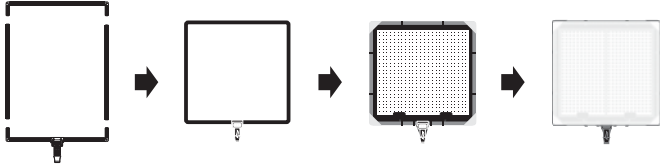


10.The easy operation instructions of LG-V58C1K1, LG-V58C2k2, LG-V58C4k1.

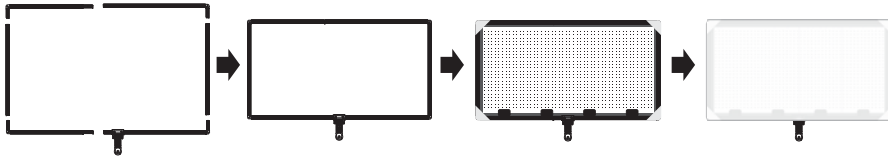
①.The operation instruction of LG-V58C1K1:



②.The operation instruction of LG-V58C2K2:



③.The operation instruction of LG-V58C4K1:



? Notice:

- 1.Do not fold the versatile light panel in half or in a small angle, or it will damage the light panel.
- 2.Please turn off the power after use, in order to avoid waste of battery volume.
- 3.Please keep the light far away from the heating object, make sure the lighting won't work in high temperature.
- 4.Please keep away from dampness.

? General Breakdown Service:

The question mentioned here is not certainly caused by the breakdown, please check the lighting again before contact with the distributor and manufacturer, eliminate the following problems before send the light for reparation.

- 1.The lighting is flickering: When powered by batteries, it may cause flickering when the battery volume is not enough; Please check the battery volume first.
- 2.The lighting can not start up normally.
 - 1) Please check whether the power supply is normal.
 - 2) If the power supply is normal, please check whether the connection between the power supply and controller is normal.
- 3) Confirm it's normal after above 2 steps, please turn the power switch to the "ON" position, and check whether the digital screen is normal.
- 4) Please check whether the connection between the connecting cable plug and the controller is loose.

LEDGO TECHNOLOGY LIMITED

Add:Zhanglin Section,Highway324,Dongli,Chenghai,Shantou City,Guangdong Province,China
 Tel:0086-754-85354187 Fax:0086-754-85300887
 E-mail:info@ledgo.hk http://www.ledgo.hk

LG-V58C LED STUDIO LIGHT

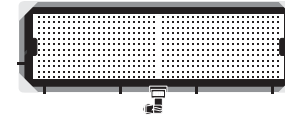
Instruction Sheet

Extra Parameters:



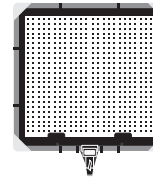
• LG-V58C1K1

Voltage: DC 15V
 Color Temperature: 5600K-3200K
 Total Power: 28.8W
 CRI(Ra):95



• LG-V58C2K1

Voltage: DC 15V
 Color Temperature: 5600K-3200K
 Total Power: 28.8Wx2
 CRI(Ra):95



• LG-V58C2K2

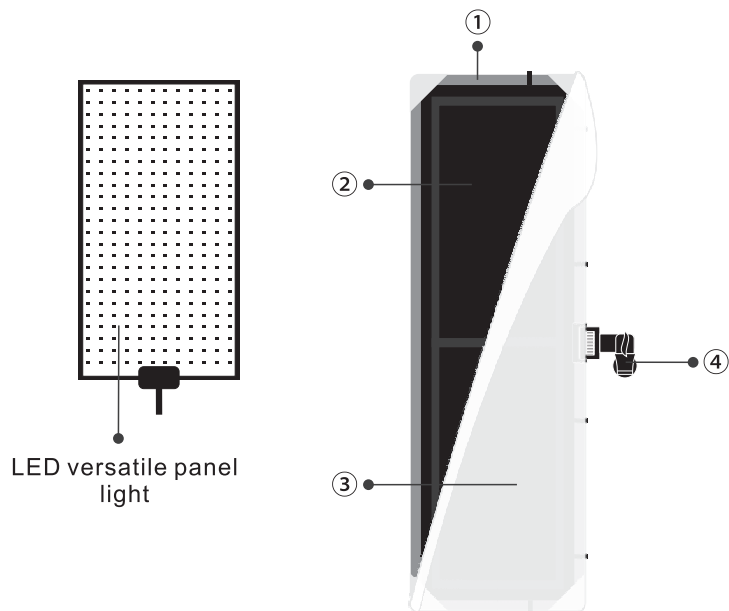
Voltage: DC 15V
 Color Temperature: 5600K-3200K
 Total Power: 28.8Wx2
 CRI(Ra):95



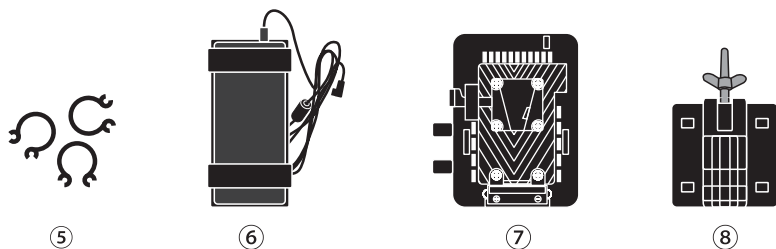
• LG-V58C4K1

Voltage: DC 15V
 Color Temperature: 5600K-3200K
 Total Power: 28.8Wx4
 CRI(Ra):95

Components:



- ①. Assemble folding aluminum frame: Could be installed into square or rectangle frame for the lighting.
- ②. Background cloths: For fixing the LED versatile panel light.
- ③. Diffusion cloths: Gentle the light.
- ④. Frame joint: For mounting the aluminum frame on the stand.

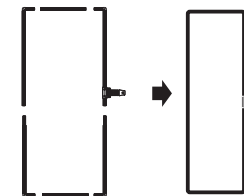


- ⑤. Cable clamp: For fixing the lighting connecting cable onto the stand.
- ⑥. Power adapter: For supplying DC15V to power the lighting.
- ⑦. Controller: For controlling the brightness, color temperature and choosing the address code of 2.4G.
- ⑧. Controller Holder: For fixing the controller onto the stand.

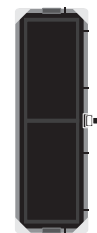
Instructions:

Note: The standard configuration is shares with LG-V58C1K1, LG-V58C2K1, LG-V58C2K2, LG-V58C4K1. The following is the operation instruction of 2K1.

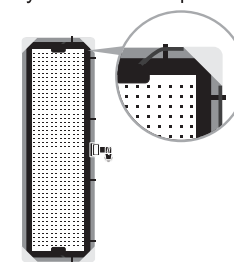
1. Assemble the aluminum frame.



2. Fixing the installed aluminum frame on the light stand, and then stick tight the Background cloth by the Velcro.



3. Fix the LED panel on the background cloth, and then fasten the connecting cable by the cable clamp.

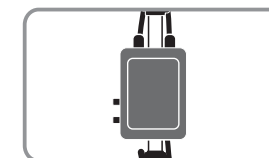
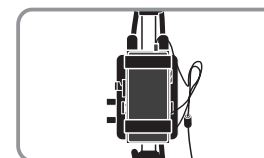


4. Put on the diffusion cloth to the aluminum frame.

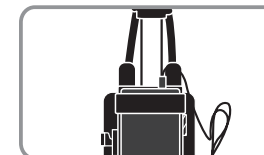


5. Fix the adapter onto the controller, and then fix the controller onto the stand.

Remark: Power could be supplied by Sony V-mount adapter holder (optional accessory) or Sony V-mount Li-ion battery (optional accessory). The light could cooperate with the LG-A2.4G remote controller or LG-W2.4G WIFI control box (both bought additionally) to fulfill remote control.



6. Insert the connecting cable into the corresponding socket of the controller, and then plug the power cord.



7. Turn the switch of the controller to the "ON" position, and then you could adjust the brightness, color temperature, 2.4G address code according to your request.
8. Adjust the frame joint until the best illumination shoot angle.
9. When operating the 2.4G function, please press the button "+" "-" to adjust the corresponding address code on the digital display. (For example, "A01" in the digital display means the 2.4G address code is the "01".)