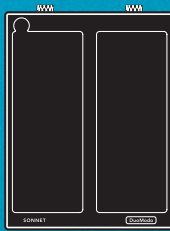


DuoModo™

Modular Thunderbolt Expansion Systems for the Desktop and for Rack Installation



Dual-Module Desktop

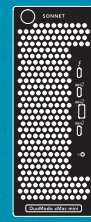


Single-Module Desktop

Modular Design
Flexible Configuration
Countless Possibilities



Dual-Module Rackmount



xMac mini Module



Echo II DV Module



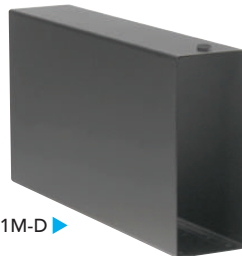
Echo I and III Modules



DM-ENC-2M-D ▶

Dual-Module Desktop Enclosure

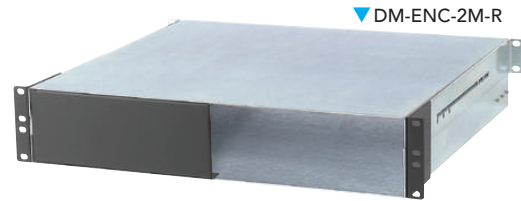
- Rugged aluminum construction
- 6.9" wide by 16.7" deep x 9.1" high (17.4 x 42.2 x 23.2 cm)



DM-ENC-1M-D ▶

Single-Module Desktop Enclosure

- Rugged aluminum construction
- 3.5" wide by 16.7" deep by 9" high (8.9 x 42.2 x 23.1 cm)
- Same enclosure used in Echo III and Echo I Desktop



DM-ENC-2M-R

Dual-Module Rackmount Enclosure

- Rugged steel construction
- 19" wide by 16.5" deep x 3.5" (2U) high (48.3 x 41.9 x 8.9 cm)
- Same enclosure used in Echo III Rackmount



DM-MOD-E3

Echo™ III Module

3-Slot Thunderbolt to PCIe Card Expansion Module

- Same module used in Echo III Desktop and Rackmount, and xMac Studio systems
- 400W power supply with 75W auxiliary power connector
- Supports three full-height, full-length PCIe cards, including up to three Avid Pro Tools | HDX cards



DM-MOD-E2

Echo II DV Module

2-Slot Thunderbolt to PCIe Card Expansion Module

- Same module used in xMac Studio/Echo II DV system
- Separate Thunderbolt bus for each PCIe card
- 400W power supply with two 75W auxiliary power connectors
- Supports two full-height, full-length PCIe cards



DM-MOD-E1

Echo I Module

1-Slot Thunderbolt to PCIe Card Expansion Module

- Same module used in Echo I Desktop and xMac Studio systems
- 400W power supply with 150W auxiliary power connector
- Supports one single- or double-width, full-height, full-length PCIe card, including the Avid Pro Tools | HDX card



DM-MOD-GPU

eGPU Module

Thunderbolt to eGPU Card Expansion Module

- Supports Thunderbolt compatible eGPU cards
- For use with computers with an Intel processor
- 800W power supply, future-proof design
- 40Gbps Thunderbolt interface offers 2800 MB/s of PCIe bandwidth to installed GPU card



DM-MOD-ZM

xMac mini Module

Mac mini Mounting Module + Thunderbolt SSD Storage Dock

- Securely holds a Mac mini — with Intel or M-series processor — in horizontal or vertical orientation
- Built-in 40Gbps Thunderbolt dock
 - ▶ One Thunderbolt port, one 10Gbps USB Type A and two 10Gbps USB Type-C ports on the front panel
 - ▶ M.2 NVMe PCIe SSD sockets; securely install two SSDs inside the enclosure for up to 16TB of fast storage, with RAID 0 performance up to 2800 MB/s
 - ▶ Internal 10Gbps USB Type A port securely connects an iLok, thumb drive or bus-powered storage drive

Other Related Products

xMac mini Server

PCIe expansion system/1U rackmount enclosure for M1 Mac mini or Intel® Mac mini computers with Thunderbolt ports.

(Part No. XMAC-MS-A-TB3)



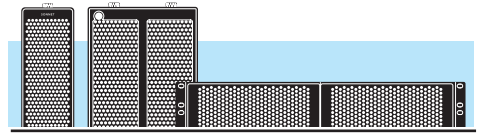
xMac Studio

Pro 3U Rackmount Enclosure with Thunderbolt to PCIe Card Expansion System for Mac Studio

(Part No. XMAC-STD-III)



Pre-Configured Systems Ready-to-go workflow solutions



**DuoModo xMac mini/
Echo III Desktop & Rackmount**

Dual-Module Desktop Or Rackmount Enclosure

- + xMac mini Module
- + Echo III Module



Desktop
◀ DM-ZM-E3-D
Rackmount
▼ DM-ZM-E3-R

Echo III Desktop & Rackmount

Single-Module Desktop Or Dual-Module Rackmount Enclosure

- + Echo III Module



Desktop
◀ ECHO-3D-TB3
Rackmount
▼ ECHO-3R-TB3

**DuoModo xMac mini/
Echo II DV Rackmount**

Dual-Module Rackmount Enclosure

- + xMac mini Module
- + Echo II DV Module



▼ DM-ZM-E2-R

Imagine the Possibilities Customize configurations to best suit your workflow

Pro Tools Workstation

Desktop (DM-ZM-E3-D) or Rackmount (DM-ZM-E3-R)



Mac mini and PCIe cards not included

Integrate a complete 2- or 3-card Pro Tools | HDX system and a Mac mini — with Intel or M-series processor — on the desktop or in just 2U of rack space

Built-in dock adds three front panel 10Gbps USB ports and one Thunderbolt port, plus internal storage expansion capability



**Mac mini Meets
Broadcast Studio**

DuoModo xMac mini/Echo II DV (DM-ZM-E2-R)

- + Dual-Module Rackmount Enclosure (DM-ENC-2M-R)
- + Echo I Module (DM-MOD-E1)



Mac mini computer and DV PCIe cards not included

Integrate three DV I/O cards and an M2 Pro Mac mini in just 4U of rack space for triple the channels

Built-in dock adds three front panel 10Gbps USB ports and one Thunderbolt port, plus internal storage expansion capability



**2U Rackmount
Graphics Workstation**

Dual-Module Rackmount Enclosure (DM-ENC-2M-R)

- + eGPU Module (DM-MOD-GPU)
- + eGPU Module (DM-MOD-GPU)



* eGPUs not compatible with Mac computers with M-series processors

Dual eGPUs deliver even more performance for the most demanding workflows*

