

Panasonic

AW-UE4

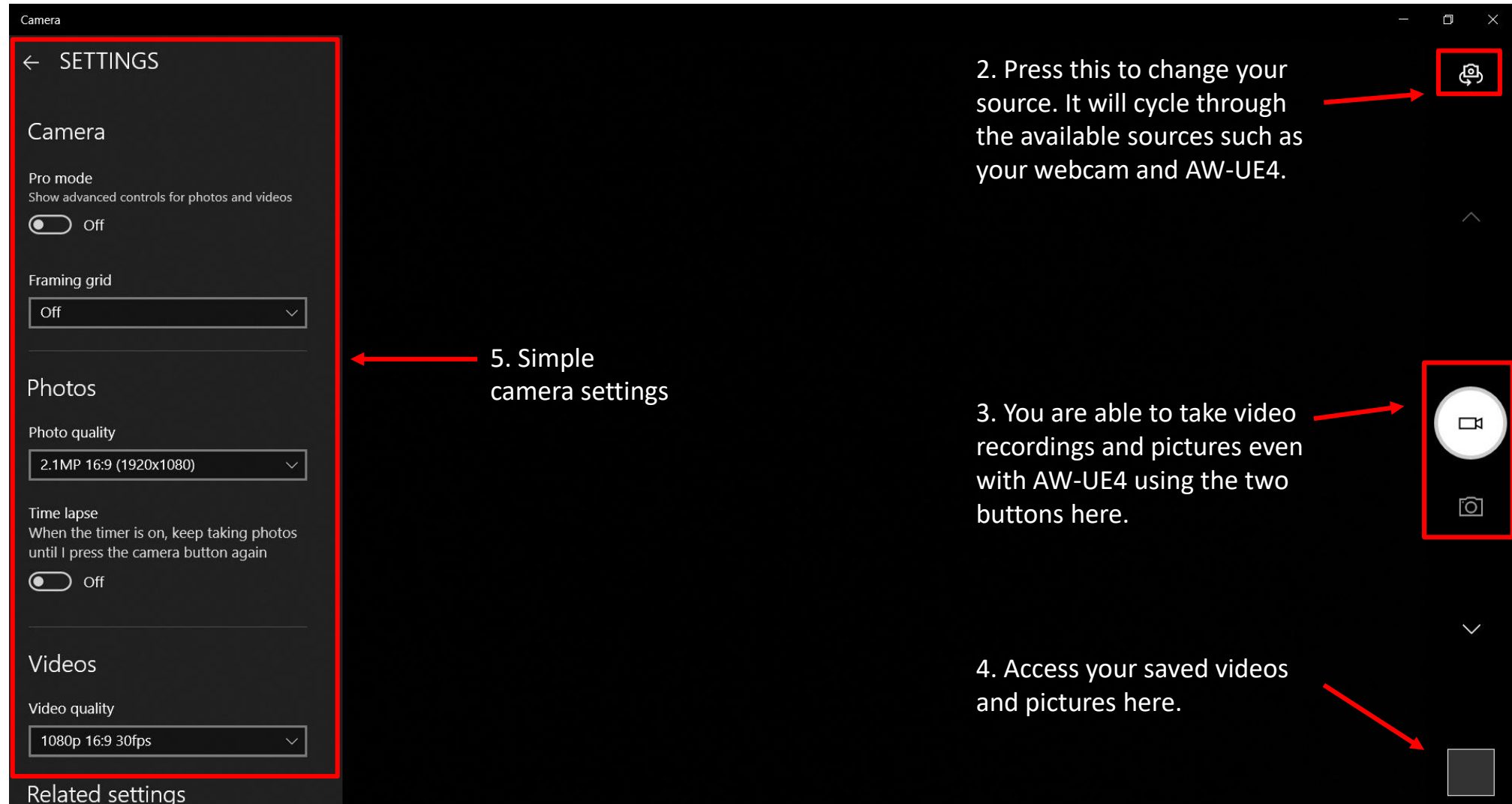
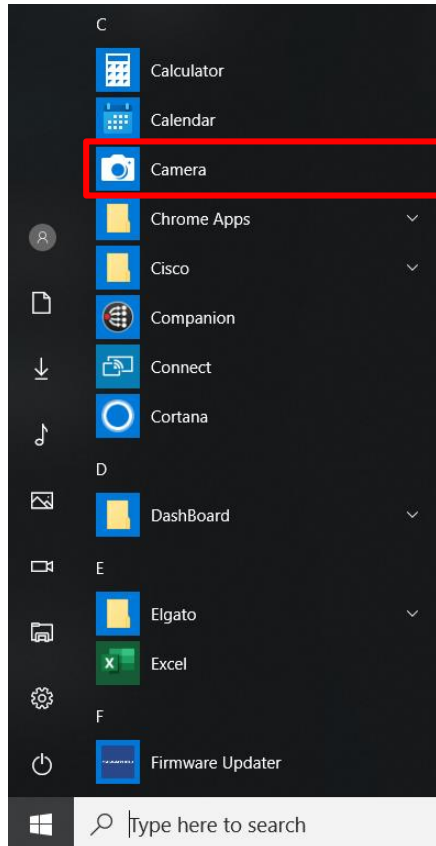
How to connect and use with the Windows Camera App, Skype, Microsoft Teams, and Zoom.

Aashay Anjaria

Windows Camera App – Connect AW-UE4 to PC via USB cable

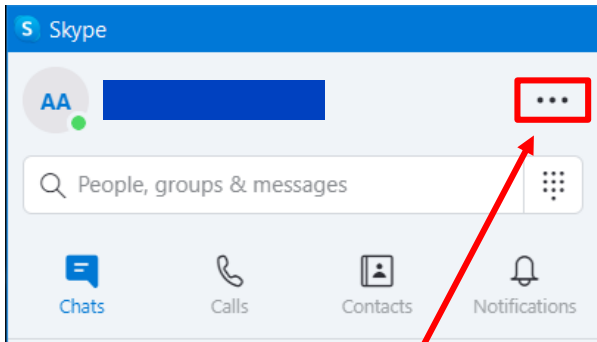
Power Supply or POE switch is not needed. Camera is powered via USB.

1. Open the Windows Camera App from the start menu.

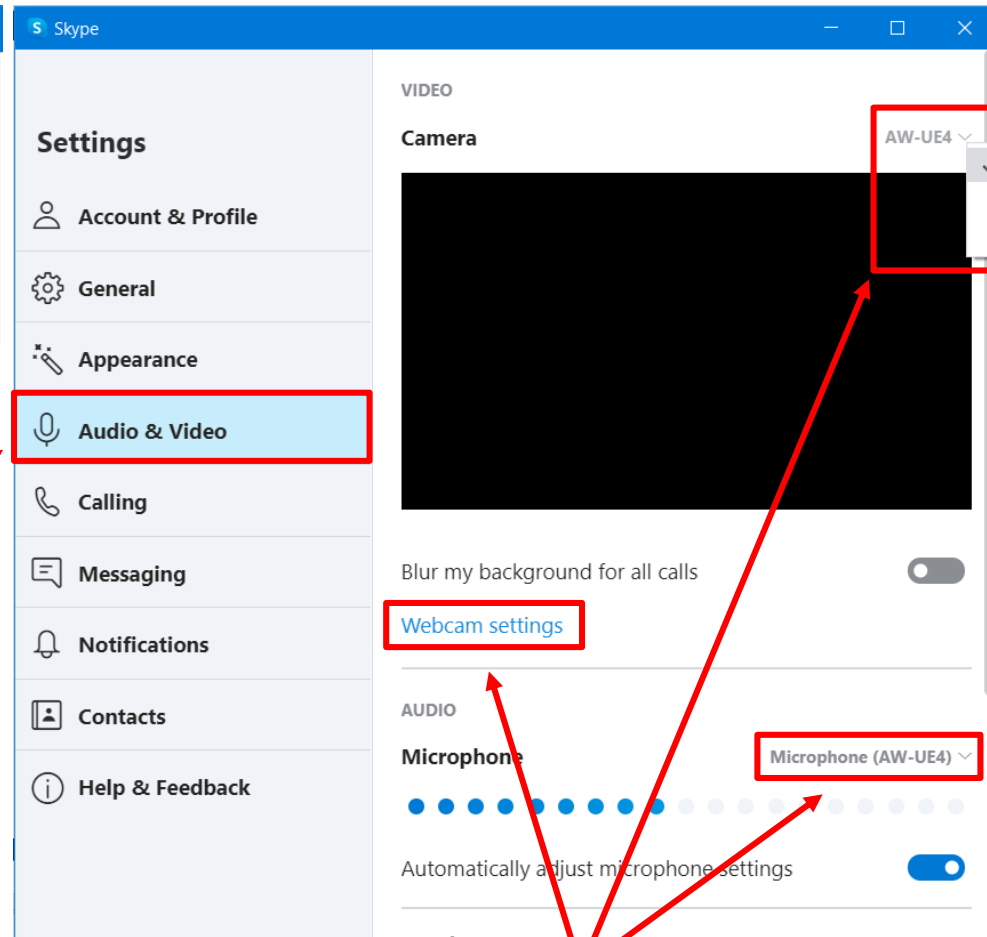


Skype – Connect AW-UE4 to PC via USB cable

Power Supply or POE switch is not needed. Camera is powered via USB.



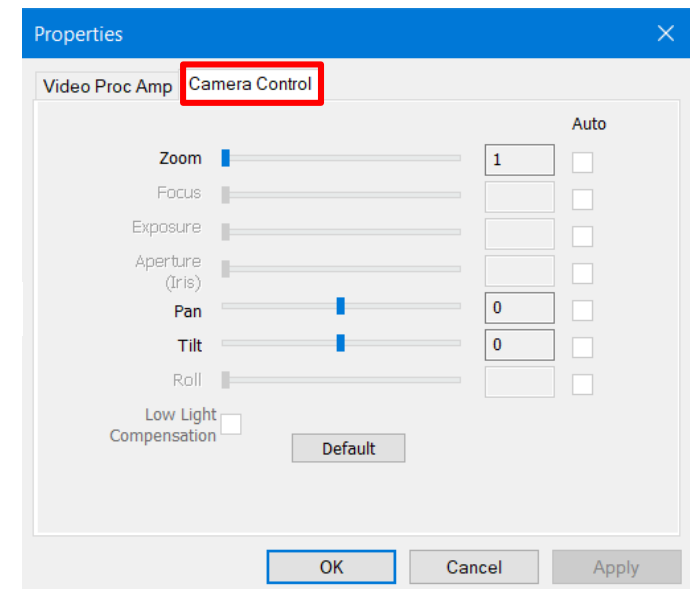
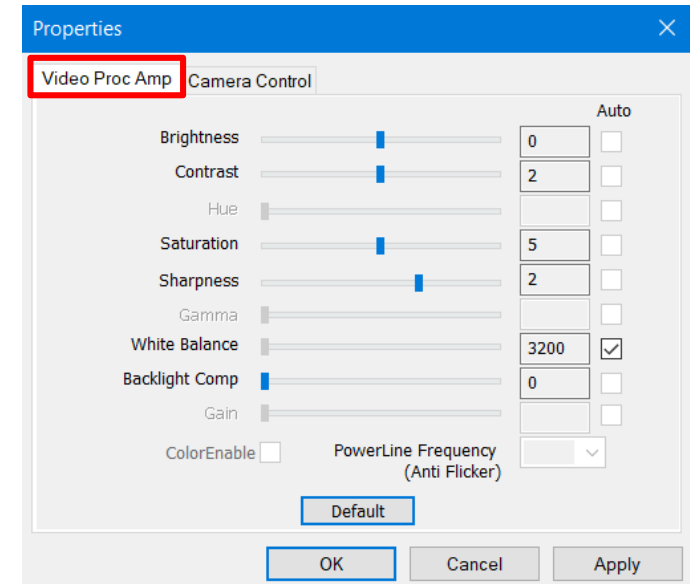
1. Open Skype and click on the settings button.



2. Click on the Audio & Video menu.

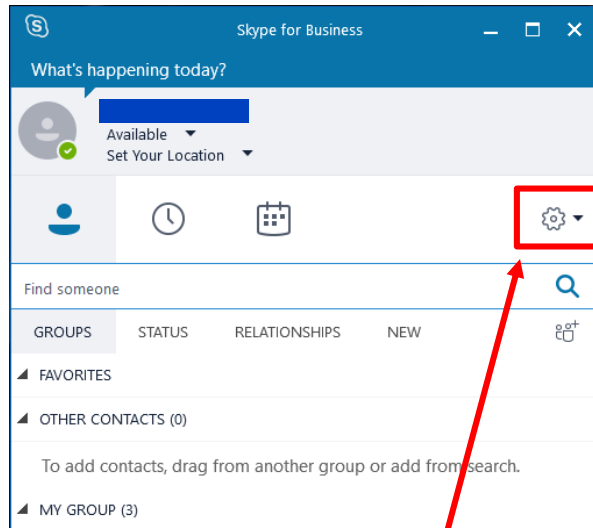
3. Select AW-UE4 from the drop-down menu. Select AW-UE4 as the Microphone if needed.

Open Webcam Settings for image adjustment and PTZ settings.



Skype for Business – Connect AW-UE4 to PC via USB cable

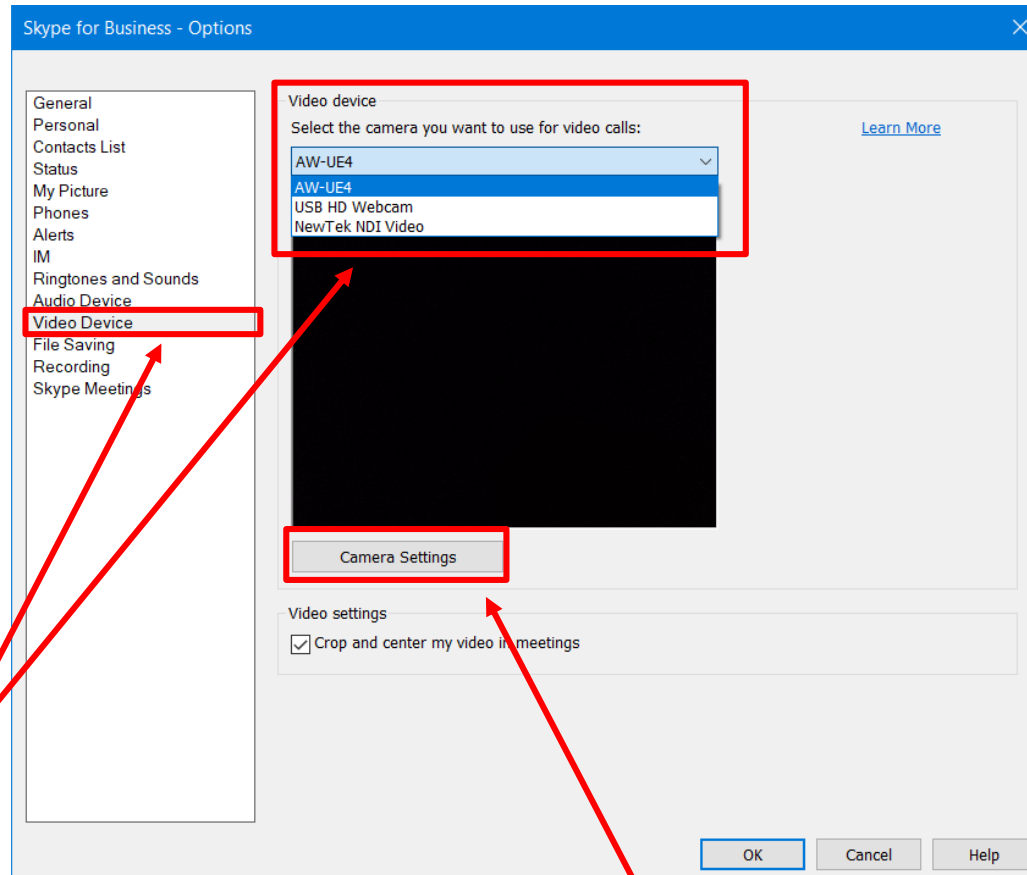
Power Supply or POE switch is not needed. Camera is powered via USB.



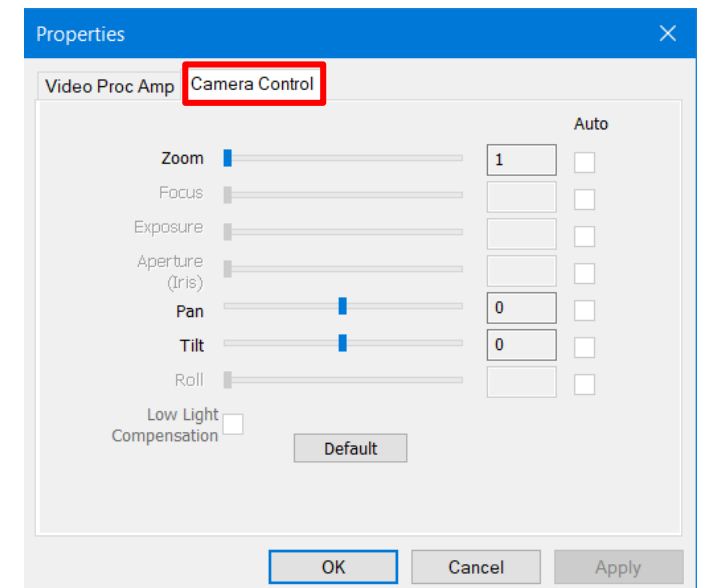
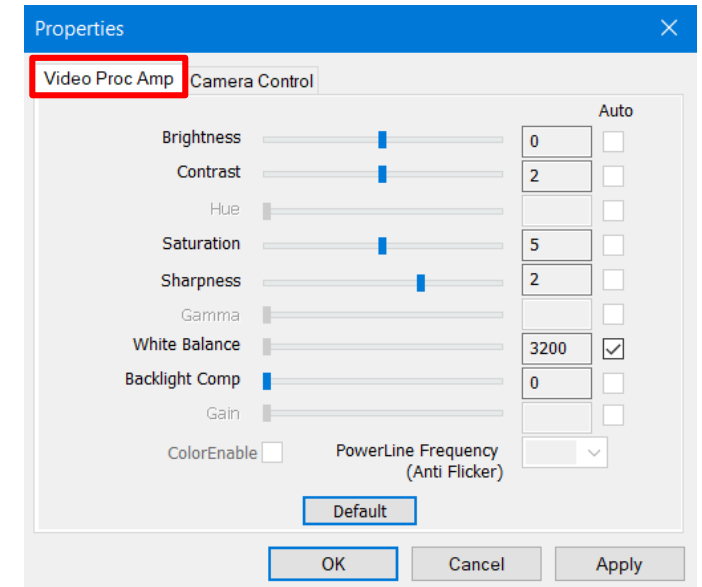
1. Open Skype for Business and click on the settings button.

2. Click on Video Device and select AW-UE4 from the drop-down list.

Select the Audio Device menu to set AW-UE4 as the microphone if needed.



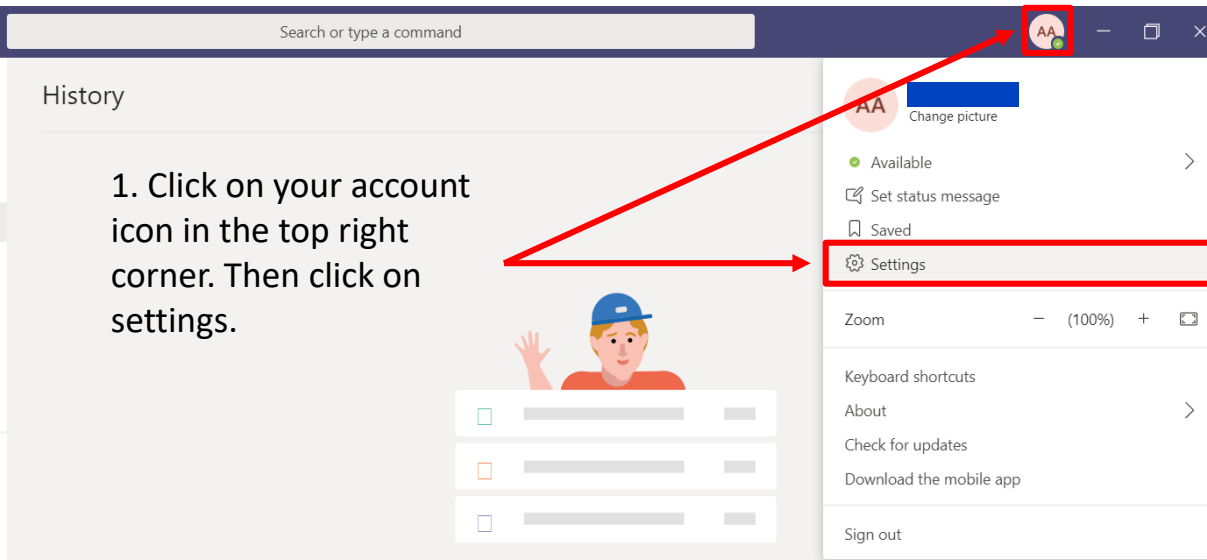
3. After connecting to AW-UE4, click on Camera Settings. A window will appear with image adjustment settings and PTZ control.



Microsoft Teams – Connect AW-UE4 to PC via USB cable

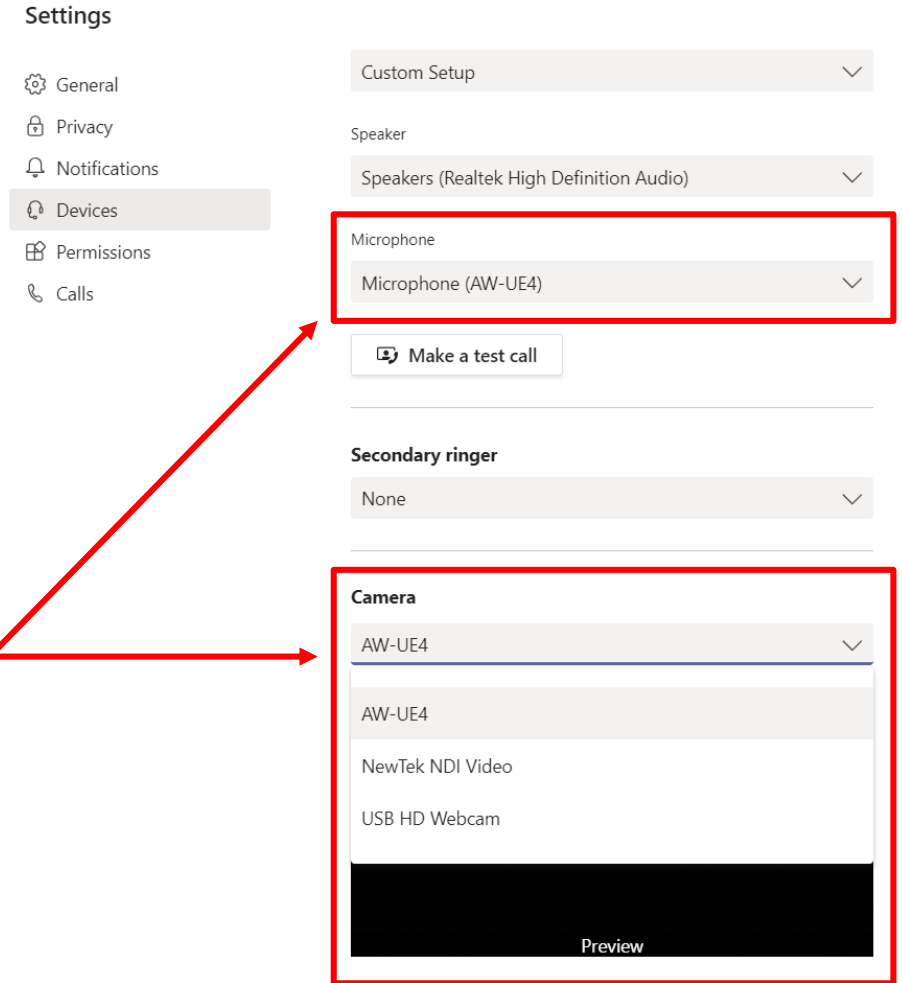
Power Supply or POE switch is not needed. Camera is powered via USB.

1. Click on your account icon in the top right corner. Then click on settings.



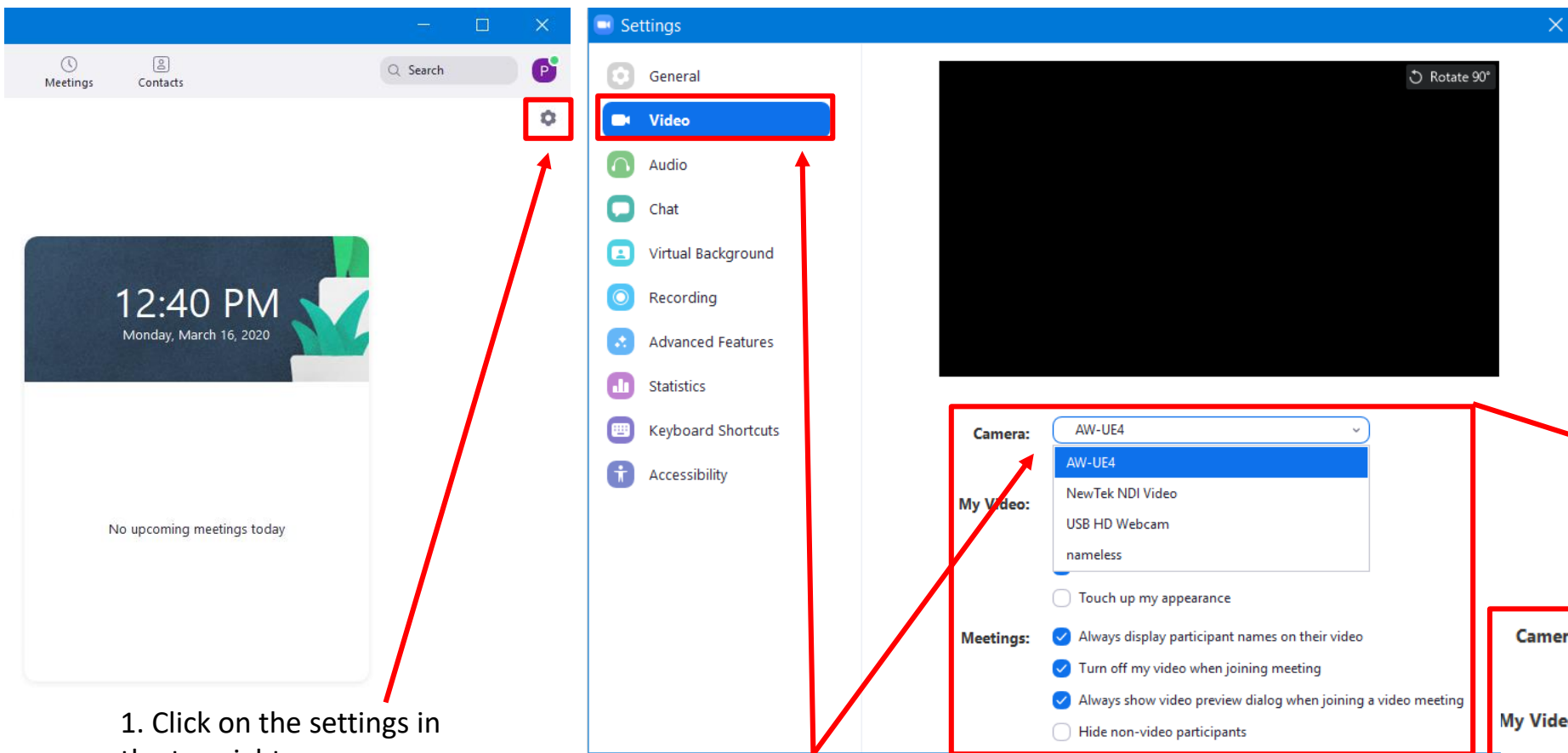
2. Click on Devices and select AW-UE4 from the drop-down menu under the Camera Category.

Make sure the Microphone is set to AW-UE4 as well if needed.



Zoom – Connect AW-UE4 to PC via USB cable

Power Supply or POE switch is not needed. Camera is powered via USB.



1. Click on the settings in the top right corner.

2. Click on Video, then select AW-UE4 from the list of camera sources.

Adjust Audio settings as well if you need the microphone from AW-UE4 as well.

3. See below the full camera settings that Zoom offers.

