



INOVATION AT ITS BEST

APOLLO
VOYAGER
AXIS
DEPLOY
ECHO/RANGER



Distributed by Holdan



APOLLO

HYBRID WORKSTATION



APOLLO FEATURES

- Breaks down into a shippable container
(Due to weight restrictions, Apollos are not flight friendly)
- Durable, scratch resistant composite corners
- Skate wheels for easy hauling in case-mode
- Dovetail quick-release wheel system
- Handhold cutouts
- Powerful and reliable foot brakes
- Unique corner clamping mount for accessories
- 544kg (1200lb) weight capacity

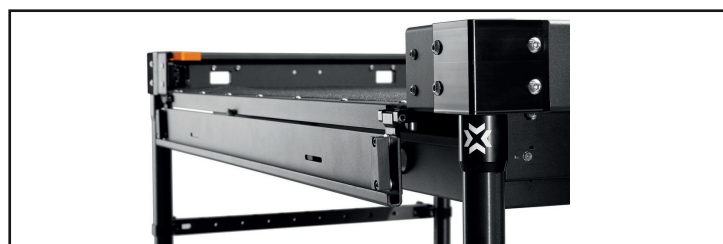


APOLLO EVO MODELS

- **Premium EVO Casters** - Sealed bearing, aluminium casters with ultimate performance and stability
- **Threaded Rail Plates** - Cheese plates with 1/4-20 and 3/8-16 threads integrated into the top pan

SPECS.	Apollo 40	Apollo 52
Collapsed:	66cm W x 101.5cm L x 19cm H 26" W x 40" L x 7.5" H	66cm W x 132cm L x 19cm H 26" W x 52" L x 7.5" H
Assembled:	66cm W x 101.5cm L x 101.5cm H 26" W x 40" L x 40" H	66cm W x 132cm L x 101.5cm H 26" W x 52" L x 40" H
Weight (EVO):	46.27kg (102lbs)	52.16kg (115lbs)

FOLDABLE FRONT LIP



All Apollos feature a foldable front lip on the top shelf, enabling users to use keyboards comfortably as well as secure the top shelf while on the move.

INSIGHT MONITOR MOUNT



Inovativ's Insight Monitor Mount system is made to plug seamlessly into the Apollo's corner plug accessory system and can accommodate multiple monitors securely.

ACCESSORIES



2-Stage Corner Mast Riser



Top / Bottom Drawer



Camera Mount System



Steadicam System

VOYAGER

TRAVEL WORKSTATION

VOYAGER FEATURES



- All Voyager models break down into "Case-Mode" making them the most flight-ready cart on the market.
- Rubberised stanchion tube release collars
- Multiple accessory mounting locations
- Durable, scratch resistant composite corners
- Skate wheels for easy hauling in case-mode
- Dovetail quick-release wheel system
- Handhold cutouts
- Powerful and reliable foot brakes



VOYAGER EVO MODELS

- Premium EVO Casters - Sealed bearing, aluminium casters with ultimate performance and stability
- SLAS System - 25cm (10") height adjustable top shelf
- Threaded Rail Plates - Cheese plates with 1/4-20 and 3/8-16 threads integrated into the top pan

VOYAGER NXT MODELS

- Steel NXT Casters - Quick-release steel casters interfacing with the INOVATIV dovetail system; heavier and lower cost
- Fixed System - Fixed height top shelf
- All EVO features available as upgrades

SPECS.	Voyager 30	Voyager 36	Voyager 42
Collapsed:	86cm W x 53cm L x 21cm H 34" W x 21" L x 8.25" H	101cm W x 63cm L x 21cm H 39.9" W x 24.7" L x 8.25" H	117cm W x 63cm L x 21cm H 45.9" W x 24.7" L x 8.25" H
Assembled:	86cm W x 53cm L x 100cm H 34" W x 21" L x 39.5" H	-	-
Assembled EVO:	-	101cm W x 63cm L x 100cm H 39.9" W x 24.7" L x 39.5" H	117cm W x 63cm L x 104cm H 45.9" W x 24.7" L x 40.9" H
Assembled NXT:	-	101cm W x 63cm L x 104cm H 39.9" W x 24.7" L x 40.9" H	117cm W x 63cm L x 104cm H 45.9" W x 24.7" L x 40.9" H
Inner Tray Size	74cm W x 48cm L 29" W x 19" L	86cm W x 59cm L 35" W x 23.25" L	104cm W x 59cm L 41" W x 23.25" L
Weight:	26.31kg (58lbs)	EVO: 30.84kg (68lbs) NXT: 37.65kg (83lbs)	EVO: 35.38kg (78lbs) NXT: 42.18kg (93lbs)

ACCESSORIES



Baby Pin System



Storage Trough



Camera Mount System



Steadicam System



Boa Monitor Mount



Robocups



Cable Hooks



Stand Hanger



Also features the keyboard-friendly X-Top



Axis is a modular workstation that is customisable to your ideal workflow. Modular components include INOVATIV's revolutionary wheels and casters, keyboard trays, monitor mounts, case holders, troughs, and additional accessory attachment brackets.

As a modular system, users may select from several individual components to build a workstation from the ground up. With its quick drop and release components plus height adjustability, AXIS gives users the ease of connecting everything tool free.

INOVATIV has curated five different AXIS kits that are customised to fit the roles of creatives in the industry: Steadicam operators, DITs, Photographers, and more.

#BEINOVATIV





Deploy Gen IV with Insight Monitor Mounts



Deploy Gen IV with Two-Stage Riser



Deploy Gen IV with Insight Monitor Mounts



Deploy Gen IV

INOVATIV's Deploy is the cart with the small footprint. Based around a light-weight aluminium framed body, the latest version is about 20% lighter.

Deploy Gen IV is a split configuration with equal top and bottom halves, with 8 rack units on the top and the lower section. It's easy to breakdown and transport with INOVATIV's reliable and lightweight 8" EVO Dovetail Wheel System in the front, plus powerful brakes and 20" back wheels. These larger wheels are designed for easy curb assistance or accessing stairs.

A notable change are the collapsible wings making it easy to access narrow halls or doorway passages; each wing can hold up to 45kg.

With the new design, there are more options to attach different accessories on the crossbar. Deploy comes with tubes for add-ons such as the 2-stage risers. The centre mount at the back allows for multiple crossbars and the flexibility to mount multiple points for mounting transceivers, receivers and boom poles. The traditional rivets at the front and back allow for multiple configurable mounting options for a variety of accessories that are height adjustable.

#BEINOVATIV

ECHO/RANGER

STUDIO/LOCATION WORKSTATION



ECHO/RANGER FEATURES

- Collapses, making them smaller for travel and storage
- Tool-less assembly
- 10" of height adjustability on the Top Shelf
- Powerful and reliable foot brakes
- Hard mounted 10" wheels allow for addition of hydraulic brakes
- Durable black powder coating and hard anodizing
- Over 50 different accessory add-ons



ECHO MODELS

- Folded Lip Top Shelf - Echo top shelves also have a folded front lip, enabling users to use keyboards comfortably
- Pre-Installed Drawers - All Echos feature the pre-installed top and bottom drawers with user configurable combo locks

RANGER MODELS

- Secure Top Shelf - The Ranger Top has a 3" lip around all four sides. Echo top shelf option also available
- Back to Basics - For those who don't need all the bells and whistles, to cut down on cost

SPECS.	Echo/Ranger 30	Echo/Ranger 36	Echo/Ranger 48
Collapsed (Echo):	51cm W x 76cm L x 58cm H 20" W x 30" L x 22.75" H	61cm W x 91cm L x 58cm H 24" W x 36" L x 22.75" H	61cm W x 122cm L x 58cm H 24" W x 48" L x 22.75" H
Collapsed (Ranger):	51cm W x 76cm L x 44cm H 20" W x 30" L x 17.5" H	61cm W x 91cm L x 44cm H 24" W x 36" L x 17.5" H	61cm W x 122cm L x 44cm H 24" W x 48" L x 17.5" H
Assembled:	51cm W x 76cm L x 99cm H 20" W x 30" L x 39" H	61cm W x 91cm L x 99cm H 24" W x 36" L x 39" H	61cm W x 122cm L x 99cm H 24" W x 48" L x 39" H
Weight:	Echo: 32.66kg (72lbs) Ranger: 26.31kg (58lbs)	Echo: 42.18kg (93lbs) Ranger: 35.38kg (78lbs)	Echo: 52.16kg (115lbs) Ranger: 35.38kg (78lbs)

ACCESSORIES



Baby Pin System



Storage Trough



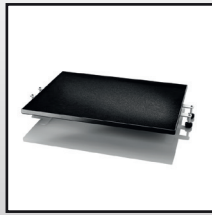
Camera Mount System



Steadicam System



Boa Monitor Mount



Middle Shelf



Cable Hooks



Stand Hanger



Contact us now for more details on the Inovativ range of products:

Tel: +44 (0)1457 851000 | sales@holdan.co.uk

www.holdan.co.uk

© Holdan Inovativ Apollo/Voyager/Axis/Deploy/Echo/Ranger v3 10/20