

# 17.3" HD/SD TFT LCD MONITOR TLM-170P



Datavideo's TLM-170P is a desktop video monitor that delivers superb image quality. It features a 3G-SDI input, a 1920x1080P full HD industrial grade LCD panel, an 8-channel embedded audio monitor and HDMI and HD-SDI inputs.

Calibrated for video use and featuring professional inputs, it is ideal for live HD production and post-production environments. It is easy to use, robust, has long LCD lifetime and able to deliver excellent performance for years.



## FEATURES

- Support 3G/HD/SD-SDI with loop thru, 2 x HDMI(V1.3), Component and 2 x CV inputs
- 8-Ch embedded audio level display of SDI input (HD MODE only); 2-Ch audio level display on HDMI input
- Support video formats:
  - 1080P 24/25/29.97/30/50/59.95/60
  - 1080i 50/59.94/60
  - 720P 50/59.94/60
  - 720x480 NTSC / 720x576 PAL
- Built in Network IP remote control interface:
  - Source select
  - Video Color adjustment
  - PIP source and position setting
  - Pixel Zoom setting up to 8X
- On-Screen Time Code display
- Front panel Headphone and Stereo speaker
- Speaker cable output connections Max 2w
- USB 2.0 interface for FW upgrade
- Tally indicator
- Display panel:
  - 17.3" 1920x1080 Full HD resolution TFT LED Panel
  - Luminance (white): 400cd/m2
  - Contrast: 600:1
  - Response time(Tr+Tf): 40ms
  - View Angle: Horizontal 80 (Left) / 80 (Right); Vertical 60 (Top) / 80 (Bottom)
- Individual adjustments of Brightness, Contrast, Color Saturation and LED Back light Level for each input
- Selectable color temperature: 6500K, 9300K and user defined mode
- Underscan and overscan mode
- Blue only
- 80% or 90% safearea display
- Edit title on safe area
- 4:3 & 16:9 display modes
- PAL & NTSC auto-switching

## FEATURES

(blue only)



Earphone and stereo speaker



TALLY Indicator



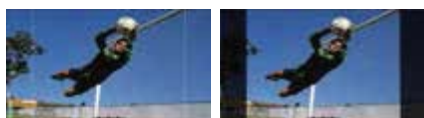
Time Code



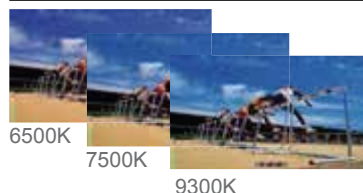
PIP 16:9 or 4:3



80% or 90% safe



color temperature



8-CH SDI audio level indicator



Network IP Remote Control



Pixel zoom up to 8X



Screen Protector Included



FEATURES



- 1 TALLY
- 2 Source Select
- 3 Blue Only
- 4 PIP
- 5 Pattern
- 6 Menu
- 7 Volume
- 8 Mute
- 9 Earphone Jack
- 10 Aspect Ratio

- 1 SDI input and loop
- 2 TALLY
- 3 audio input
- 4 2 x CV inputs
- 5 CV2 loop out
- 6 YUV input
- 7 Audio line out
- 8 DC 12V
- 9 Power switch
- 10 2 x HDMI inputs
- 11 RJ-45 Network Remote

SPECIFICATIONS

LCD	Panel Size	17.3"
	Resolution	Fuu HD 1920 x 1080
	View Angle	"Top: 60 deg Bottom: 80 deg Left: 80 deg Right: 80 deg"
	White Luminance	400cd
	Contrast	600
Video INPUT	HDMI x 2	HDMI Ver. 1.3
	BNC x 1	3G/HD/SD SDI
	BNC x3	Component
Video loop out	BNC x 2	Composite
	BNC x 1	HD-SDI Loop Through Output
	BNC x 1	CV2 Loop Thru Output
SDI Signal Format	SMPTE-425M-A/B	1080p (60/59.94/50/30/25/24) 1080i (60/59.94/50)
	SMPTE-274M	1080p (30/29.97/25/24)
	SMPTE-296M	720p (60/59.94/50)
	SMPTE-125M	480i (59.94)
	ITU-R BT.656	576i (50)
	Audio Input	Supports SD/HD-SDI embedded audio (8-CH)
Supports HDMI embedded audio (Ver.1.3)		
Speaker cable output connections (L-, L+, R-, R+) Max 5v p - p (2w)		Speaker Output connections Max 5v p - p (2w)
Audio Output	Built in stereo speakers	
Maintenance	USB 2.0 FW Upgrade	
Power	DC 12V, 30 watts	
Operating Temperature	0 °C to 50 °C	
Accessory	New professional Stand	