

## NETWORK MEDIA PLAYER

# MP-1000

RSS



DataVideo MP-1000 is a versatile digital media player with LAN and Internet connectivity.

Media and settings are stored on its two gigabyte solid-state media card, and can be easily updated via a network connection, using the built-in Ethernet port. DVD quality content can be scheduled remotely or locally. Support for RSS, enables automatic updated scrolling text, like news bulletins from leading broadcasters, with customizable colours and opacity.



DataVideo MP-1000 supports the more popular media formats, such as JPEG (for slideshows), MPEG 1, 2 and 4, AVI and DIVX movie files and MP3 and WAV sound files.

MP-1000 is rugged and stands up to the rigorous challenges of today's most demanding digital media applications. The compact design also makes MP-1000 ideal for kiosks, display advertising, and other small-footprint installations.

Distributing content to multiple displays and locations has never been easier and more affordable.

## SERVER UI FUNCTION DESCRIPTION

Control ICONs:

Send command to control remote players of same group

Inquiry ICON:

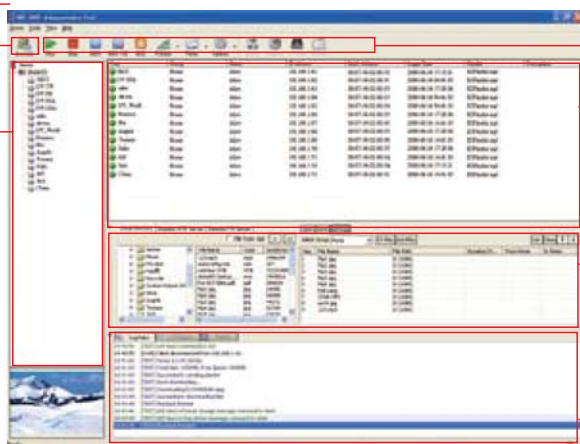
Send command to get inquiry back from individual remote player

Group and Player Window: Display groups and its remote players structure

On-line Account Window: Show activity and status of remote players

Playlist Commander Window: Create and manage playlist file for remote players of same group

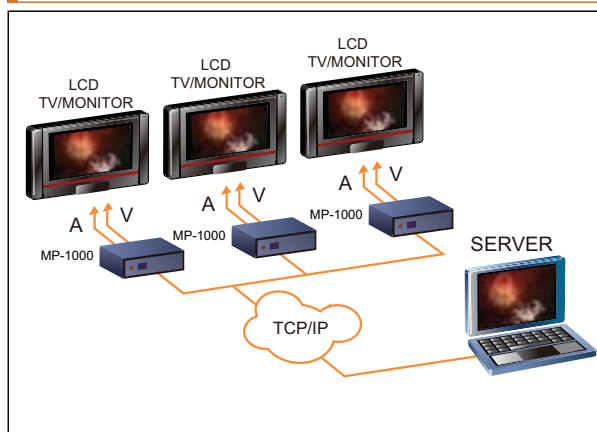
Playlist Commander Window: Create and manage playlist file for remote players of same group



## FEATURES

- DataVideo MP-1000 supports the more popular media formats, such as JPEG (for slideshows), MPEG 1, 2 and 4, AVI and DIVX movie files and MP3 and WAV sound files.
- Video output: NTSC 640x480 / PAL 720x576
- Scheduled auto-playback of audio & video
- Menu-controlled playback
- RSS support for scrolling text display
- Media and settings are stored on a 2 gigabyte solid-state media card
- Hundreds of units can be controlled and maintained remotely from one server
- Scheduled content uploads

## SETUP EXAMPLE

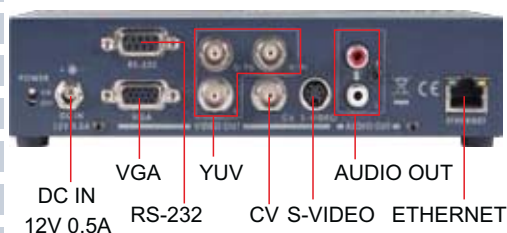


## FRONT VIEW



POWER

## REAR VIEW



DC IN 12V 0.5A  
VGA RS-232  
YUV  
CV S-VIDEO  
AUDIO OUT  
ETHERNET

## APPLICATION

### Education



### Outdoor electronic billboards



### Advertisement in public transport



### Welcome boards/Hospitality



## SPECIFICATIONS

### Output:

CV x 1 (BNC connector)  
S-Video x 1 (S-Video connector)  
YUV x 1 (BNC connector)  
VGA x 1 (D-Sub 15 pins)  
Unbalanced audio, stereo x 1 (RCA connector)

### Input:

RJ-45

### Video:

NTSC  
PAL

BW= 5.0M <3dB

S/N > 50

Over or Less Amplitude in Color bar <5%

### Audio:

Maximum 6V p-p input without distortion

Bandwidth: 20HZ ~ 20KHZ

S/N Ratio: >65 dB, THD: <0.1%

### Media format support:

#### • Photo

- JPEG (.jpg, .jpeg)
- Support photo resolution up to 5120 x 3840
- Output resolution: 640x480

### • Audio

- MP3 (.mp3) from 32K to 256K bps
- PCM wave (.wav)

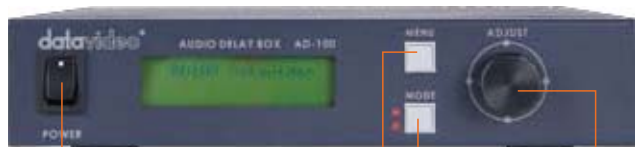
### • Video

- MPEG1 (.mpg, .dat)
- MPEG2 (.mpg, .vob, .avi)
- MPEG4 SP, ASP (.avi, .asf, .divx)
- Motion-JPEG (.avi)
- Video output: NTSC 640x480 or PAL 720x576

\* SP is simple profile, ASP is Advanced SP

## AUDIO DELAY BOX

# AD-100



POWER

MENU  
MODE SELECT

ADJUST

## REAR VIEW



AUDIO OUT

AUDIO IN

AD-100 is an easy to use audio delay box to enable you to synchronize video and audio. The unit features traditional RCA (phone) connector as well as professional XLR type connection. Built in a rugged metal housing for use in the field or studio setup.

## FEATURES

- Both traditional RCA (phone) connector as well as professional XLR type connection.
- Built in a rugged metal housing for use in the field or studio setup
- Low power consumption, can be powered by Datavideo's PD-1 power distribution center connection.

## DIMENSIONS

### Power:

DC12V 2.5A

### Dimensions:

240mm (L) x 205 mm (W) x 45mm (H)

### Weight:

300g