

**HD/SD Recorder**

# HDR-55



## Quick Start Guide

## Table of contents

<b>Warnings and Precautions</b> .....	<b>2</b>
<b>Warranty</b> .....	<b>3</b>
<b>Disposal</b> .....	<b>3</b>
<b>Packing List</b> .....	<b>4</b>
<b>Introduction</b> .....	<b>4</b>
<b>Features</b> .....	<b>4</b>
<b>How to Assemble 2.5" HDD in Removable Rack</b> .....	<b>5</b>
<b>Connections &amp; Controls</b> .....	<b>6</b>
Front Panel .....	6
Rear Panel.....	7
<b>Powering On</b> .....	<b>8</b>
<b>Menu Options</b> .....	<b>8</b>
HDD Mode Menu.....	11
Connecting to a PC / MAC .....	11
HD MPEG2 BIT RATE Menu.....	12
SD MPEG2 BIT RATE Menu .....	13
SET 1080i H-RES. Menu.....	14
GPI Mode & Functions Menus .....	15
Select the GPI Function .....	15
Set Date & Time Menu .....	16
Format Hard Disk Menu .....	17
Erase Track Menu .....	17
HDD Surface Scan Menu .....	18
Playing a Track.....	19
Recording a track .....	20
<b>Connecting to a Computer</b> .....	<b>21</b>
Connecting to a PC .....	21
Connecting to a MAC .....	23
<b>RS-422 Protocol Reference V1.0</b> .....	<b>24</b>
<b>Dimension</b> .....	<b>35</b>
<b>Specifications</b> .....	<b>36</b>
<b>Service &amp; Support</b> .....	<b>37</b>



## Warnings and Precautions

1. Read all of these warnings and save them for later reference.
2. Follow all warnings and instructions marked on this unit.
3. Unplug this unit from the wall outlet before cleaning. Do not use liquid or aerosol cleaners. Use a damp cloth for cleaning.
4. Do not use this unit in or near water.
5. Do not place this unit on an unstable cart, stand, or table. The unit may fall, causing serious damage.
6. Slots and openings on the cabinet top, back, and bottom are provided for ventilation. To ensure safe and reliable operation of this unit, and to protect it from overheating, do not block or cover these openings. Do not place this unit on a bed, sofa, rug, or similar surface, as the ventilation openings on the bottom of the cabinet will be blocked. This unit should never be placed near or over a heat register or radiator. This unit should not be placed in a built-in installation unless proper ventilation is provided.
7. This product should only be operated from the type of power source indicated on the marking label of the AC adapter. If you are not sure of the type of power available, consult your Datavideo dealer or your local power company.
8. Do not allow anything to rest on the power cord. Do not locate this unit where the power cord will be walked on, rolled over, or otherwise stressed.
9. If an extension cord must be used with this unit, make sure that the total of the ampere ratings on the products plugged into the extension cord do not exceed the extension cord's rating.
10. Make sure that the total amperes of all the units that are plugged into a single wall outlet do not exceed 15 amperes.
11. Never push objects of any kind into this unit through the cabinet ventilation slots, as they may touch dangerous voltage points or short out parts that could result in risk of fire or electric shock. Never spill liquid of any kind onto or into this unit.
12. Except as specifically explained elsewhere in this manual, do not attempt to service this product yourself. Opening or removing covers that are marked "Do Not Remove" may expose you to dangerous voltage points or other risks, and will void your warranty. Refer all service issues to qualified service personnel.
13. Unplug this product from the wall outlet and refer to qualified service personnel under the following conditions:
  - a. When the power cord is damaged or frayed;
  - b. When liquid has spilled into the unit;
  - c. When the product has been exposed to rain or water;
  - d. When the product does not operate normally under normal operating conditions. Adjust only those controls that are covered by the operating instructions in this manual; improper adjustment of other controls may result in damage to the unit and may often require extensive work by a qualified technician to restore the unit to normal operation;
  - e. When the product has been dropped or the cabinet has been damaged;
  - f. When the product exhibits a distinct change in performance, indicating a need for service.

To avoid any possible static damage to your equipment please ensure your camcorder / deck is switched off when connecting or disconnecting the IEEE-1394 cable.

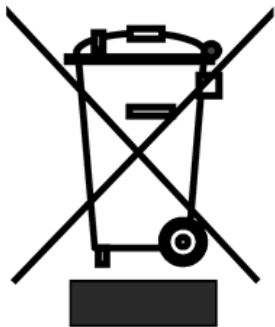
## Warranty

Datavideo warrants that the equipment it manufactures shall be free from defects in material and workmanship for a period of 2 years from the date of product purchased. If equipment fails due to such defects, Datavideo will, at its option, repair or provide a replacement for the defective part or product. Equipment that fails after the warranty period, has been operated or installed in a manner other than that specified by Datavideo, or has been subjected to abuse or modification, will be repaired for time and material charges at the Buyer's expense.

This warranty does not affect your statutory rights within the Country of purchase.

## Disposal

For EU Customers only - WEEE Marking.



This symbol on the product indicates that it will not be treated as household waste. It must be handed over to the applicable take-back scheme for the recycling of electrical and electronic equipment. For more detailed information about the recycling of this product, please contact your local Datavideo office.

## Packing List

The following items should be included in the box. If any items are missing please contact your supplier.

1	x	AD Switch DC12V / 3A
1	x	USB Cable (Y type)
2	x	2.5" Removable HDD Enclosure
2	x	L Type Rack
10	x	M3 X 4 m/m Screws
2	x	2.0 X 6 m/m Screws
2	x	HD Label
4	x	Label
1	x	Instruction Manual

## Introduction

The Datavideo HDR-55 is a hard drive based video recorder & player, with a removable hard drive enclosure. The HDR-55 records from standard and high definition video via SDI with a convenient loop through / pass through for monitoring. RS-422 & RS-232 remote control interface are standard.

The HDR-55 provides a choice of recording formats in MPEG- II including 1080i, 720p, 576i and 480i with a choice if IBP or Intra-frame(i-frame).

The recorded files are compatible with a wide range of NLE and play out solutions. The compatible 2U design can be easily integrated with other equipment or can be used as a stand alone recorder / player in the studio or on location.

## Features

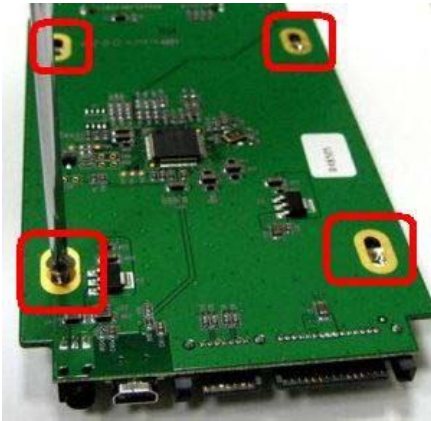
- HD-SDI & SD-SDI video input (with loop though)
- HDMI output and SDI output
- Video record format:
  - ◆ SD: 5Mbps-15Mbps.IBS.4:2:0 colour sampling
  - ◆ SD: 50Mbps-IBS.4:2:2 colour sampling
  - ◆ HD: 20Mbps-60Mbps.IBS.4:2:0 colour sampling
  - ◆ HD: 100Mbps-I frame 4:2:2 colour sampling (1080i only)
  - ◆ M2t recording format (Compatible with most NLE systems)
- Audio record format:
  - ◆ MPEG- I Layer 2
  - ◆ Sampling rate: 48KHZ
  - ◆ Bit rate: 384 Kbps
- Hard drive enclosure includes convenient USB 2.0 connector and SATA connector
- 2U Height-Half 19" standard rack mount size
- Audio monitor function
- XLR balanced audio input
- Support RS-422, RS-232 & GPI control interface
- DC In 12V

## How to Assemble 2.5" HDD in Removable Rack

1. Remove two screws from the 2.5" removable HDD rack front cover then pull out the PCB.



2. Assemble four screws to fasten 2.5" HDD on PCB.



3. Push PCB into the HDD rack



4. Assemble two screws to fasten HD rack front cover.

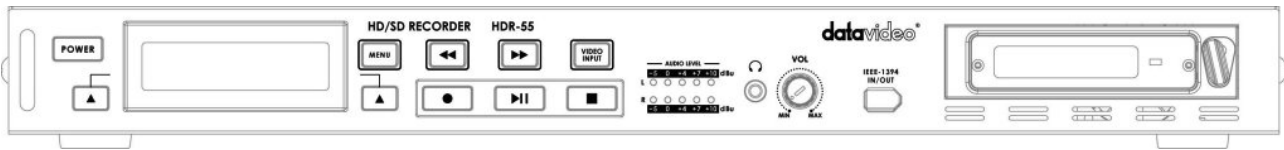


5. Push 2.5" HDD Removable rack into HDR-55 then turn button to left lock the rack.

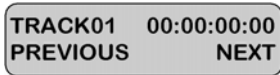


# Connections & Controls

## Front Panel



Power On / Off Button. This is a soft power on / off button which powers the unit on from a state of standby; the main power on / off switch is on the rear panel.



Display Panel. Displays the status of the HDR-55. The display will show Track Number, timecode, or if the Menu Button is pressed the Menu Display.



Menu Button. This calls up the menu display which is navigated using the Fwd / Rew Buttons and Previous / Next Buttons



Fwd / Rew Buttons. In playback mode these buttons will operate as Fast Forward and Rewind Buttons. If the Menu Button is pressed these buttons will navigate backwards and forwards between the various menu options. The HDR-55 has "auto Rewind and Playback" function. You just need to press "Rew" key first +"PLAY" key then the HDR-55 will replay the last segment just recorded (2G file size maximum).



Video Input Button. Switches the HDR-55 to Video (HD/SD-SDI) Input mode.



Previous / Next Buttons. These buttons navigate up and down between recorded tracks and menu options.



Record Button. Puts the HDR-55 into Record Mode. To start recording press the Record Button and Play Button simultaneously.

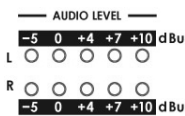
**N.B. Unit will not record if no video signal is present.**



Play / Pause Button. Starts playback of a track, or pauses playback of a track- status will be displayed on the Display Panel. Also Starts / Pauses a recording when unit is in Record mode.



Stop Button. Stops playback or record.



The Audio Input Level LEDs show the audio input levels from the incoming source.



The Audio Level Adjustments allow you to adjust the headphone volume.



Accepts a stereo mini jack plug for stereo headphone. The headphone volume is controlled by the Audio Level Adjustments.

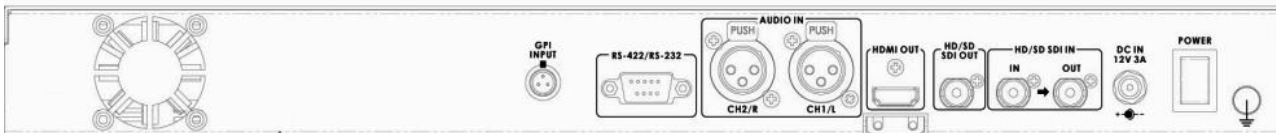


6 Pin DV In/Out Port. This is a convenient front mounted DV / HDV camcorder, or to a PC for file transfer.

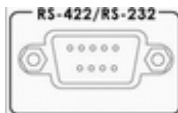


2.5" Removable HDD Rack, SATA & USB interface connecting to a PC for file transfer.

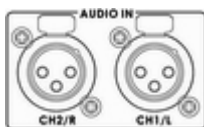
## Rear Panel



The GPI socket can be used for simple external control. The HDR-55 can accept pulse or level trigger inputs, which can trigger record or playback and pause commands. See GPI Mode & Function Menus for more details.



RS-422 Port. The HDR-55 can be controlled via RS-422 from external devices. The HDR-55 uses standard Sony protocol. Connect the RS-422 control cable to this port.



2 channels XLR Balanced Audio input.

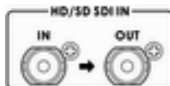


HDMI Out Ports. Ports for connecting to HDMI external devices.



HD- SDI Output. 4:2:2 SDI Video data supports SMPTE 292M standard at 1.5G Mbps.

SDI transfers professional level video signals and it's can connect to long distance transmission systems.



HD - SDI input and pass-through output connectors.



DC In Socket. Connect the supplied 12V / 3A PSU to this socket. The connection can be secured by screwing the outer fastening ring of the DC In plug to the socket



Power On/Off Switch. Switches the power On / Off



Grounding Terminal. When connecting this unit to any other component, make sure that it is properly grounded by connecting this terminal to an appropriate point. When connecting, use the socket and be sure to use wire with a cross-sectional area of at least 1.0 mm<sup>2</sup>.



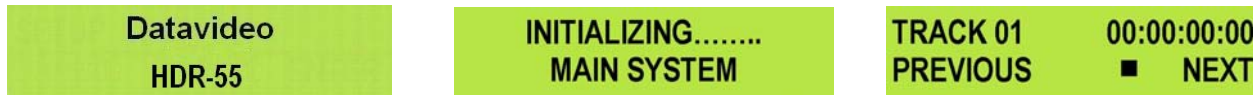
## Powering On

Connect the HDR-55 power supply to the DC In socket. Ensure the power cable is connected to a suitable mains socket.



Press the Power Button until it lights up

The LCD display panel should show HDR-55 and after a few seconds the track display should appear and the HDR-55 is ready to go



## Menu Options

The HDR-55 is a menu driven unit; The menu settings are non-volatile (they are stored even when the unit is switched off), so many of the settings, such as date and time, you will only need to set once. We will look at each individual menu in more detail, but here is a quick overview of them. **N.B. Not all menus appear when the Video Input Button is illuminated.**

The Menus are:

**HDD MODE**  
CANCEL ENTER

### HDD MODE

This mode is setting the HDR-55 to HDD mode for drag and drop file transfers to a PC or MAC.

**See HDD Mode Menu for more details.**

**SETUP LOOP PLAY**  
CANCEL ENTER

### SETUP LOOP PLAY

Sets the HDR-55 to loop play a track; the track will continuously loop until stopped.

**FREE SPACE**  
CANCEL ENTER

### FREE SPACE

Displays how much HDD space is available on the HDR-55.

**TOTAL SPACE**  
CANCEL ENTER

### TOTAL SPACE

Displays the total available HDD storage on the HDR-55.

**AUDIO INPUT SOURCE**  
CANCEL ENTER

### AUDIO INPUT SOURCE

The HDR-55 has two types Audio Input can be set.

- Select **ANALOG AUDIO** is from Mini XLR audio input.
- Select **SDI EMBEDDED AUDIO** is from SDI input.

**HD MPEG2 BIT RATE**  
CANCEL ENTER

### HD MPEG2 BIT RATE

The HDR-55 has nine modes HD MPEG2 Bit Rate ( 20,25,30,35,40,45,50,55,60 Mbps ) can be set.

**See HD MPEG2 BIT RATE Menu for more details.**

**SD MPEG2 BIT RATE**  
CANCEL ENTER

### SD MPEG2 BIT RATE

The HDR-55 has Three modes SD MPEG2 Bit Rate (5, 10, 15 Mbps) can be set.

**See SD MPEG2 BIT RATE Menu for more details.**

**SET I-FRAME ONLY**  
CANCEL ENTER

### SET I-FRAME ONLY

Set HDR to encode Intra frame only.

**SET 1080i H-RES.**  
CANCEL ENTER

#### **SET 1080i H-RES.**

To select the encoding horizontal resolution while input source is 1920x1080i  
- Select **1920**, the record format is 1920x1080i.  
- Select **1440**, the record format is 1440x1080i.  
**See SET 1080i H-RES. Menu for more details.**

**SET SD ASPECT RATIO**  
CANCEL ENTER

#### **SET SD ASPECT RATIO**

To select the aspect ratio.  
- Select **16:9**, the record aspect ratio format is 16:9.  
- Select **4:3**, the record aspect ratio format is 4:3.

**SET GPI TRIGGER MODE**  
CANCEL ENTER

#### **SET GPI TRIGGER MODE**

The HDR-55 has two GPI trigger modes, Pulse or Level trigger can be set.  
**See GPI Mode & Function Menus for more details.**

**SELECT GPI FUNCTION**  
CANCEL ENTER

#### **SELECT GPI FUNCTION**

The GPI function can be set to either Play / Play Pause or Record / Record Pause.  
**See GPI Mode & Function Menus for more details.**

**SET DATE & TIME**  
CANCEL ENTER

#### **SET DATE & TIME**

Sets the date and time on the HDR-55; the setting is non-volatile so it is stored when the unit is powered off.  
**See Set Date & Time Menu for more details.**

**FORMAT HARD DISK**  
CANCEL ENTER

#### **FORMAT HARD DISK**

Formats the HDD and removes all files and tracks from the HDR-55.  
**See Format Hard Disk Menu for more details.**

**ERASE TRACK**  
CANCEL ENTER

#### **ERASE TRACK**

Erases individual tracks from the HDR-55.  
**See Erase Track Menu for more details.**

**HDD SURFACE SCAN**  
CANCEL ENTER

#### **HDD SURFACE SCAN**

Checks the HDD for errors / bad sectors. This is only necessary if your HDR-55 is not performing correctly, or you install a new HDD. A result.txt file is created in the root directory of the HDD, this can be viewed from a PC.

**HDD MODE CABLE LEN.**  
CANCEL ENTER

#### **HDD MODE CABLE LEN.**

The HDR-55 has two types cable mode can be set when connect the HDR to PC or MAC.  
- If your IEEE 1394 cable length  $\leq 20$  M, please select cable mode:  
**LONG DISTANCE CABLE.**  
- If your IEEE 1394 cable length  $\leq 1.8$  M, please select cable mode:  
**SHORT DISTANCE CABLE.**

**SELECT HDV TYPE**  
CANCEL ENTER

#### **SELECT HDV TYPE**

Select the HDV type (via IEEE-1394 input)  
- 1440x1080 59.94i  
- 1440x1080 50i  
- 1280x720 59.94p  
- 1280x720 50p

*Note: Please check input source is the same with this setting.*

**SET HDV MONITOR**  
CANCEL ENTER

#### **SET HDV MONITOR**

This mode is set HDV monitor Enable or Disable.  
When set this mode to enable, HDV input source will pass through to HDMI output.

**D-SUB H/W INTERFACE**  
**CANCEL                      ENTER**

**D-SUB H/W INTERFACE**

The 9 pin D-SUB can be set to either RS-422 (differential) or RS-232 (single end) transmission mode

- Select **RS-232** mode, you can control HDR-55 via RS-232 from PC.
- Select **RS-422** mode, you can control HDR-55 via RS-422 from external devices.

**UPGRADE FP FIRMWARE**  
**CANCEL                      ENTER**

**UPDATE FP FIRMWARE**

When this mode set enable, HDR-55 will into the BOOT Loader mode for upgrade FP firmware.

**FIRMWARE VERSION**  
**CANCEL                      ENTER**

**FIRMWARE VERSION**

Display the Rev No. and Firmware Version of the HDR-55

## HDD Mode Menu

These Datavideo Recorder are FAT32 based, giving an approximate 2G file limit. There can't be clips longer than 2Gs, resulting in multiple files per track. The Open GOP structure of the 1080 stream requires information that contained in these multiple files to have a truly contiguous video/audio file, because of the nature of Open GOP compression. Some NLE systems do not combine the m2t files when imported, so this needs to be done prior to import. Hence Datavideo provide a utility (M2T\_FileCombine.exe) to combine the m2t files.

### How to use M2T\_FileCombine.exe to combine the .m2t or .dv files

- Step1 - Please connect HDR-40 to PC via IEEE1394 or USB cable
- Step2 - Open **M2T\_FileCombine.exe**
- Step3 - Select source from hard disk (HDR-40)
- Step4 - Select file **DV\_TRACK01(01)** or **M2T\_TRACK02(01)** ...
- Step5 - Click START to edit file name and then press SAVE combine the files.

The HDD Mode Menu will set up the HDR-55 as an external IEEE-1394 (Firewire) drive, for direct drag and drop file transfer to a PC or MAC. The files appear in the root directory of the HDR-55 hard disk, and are numbered with the track number that appears in the LCD display when you are recording or playing back the track.

The HDR-55 uses a FAT32 file structure, so large tracks are broken down into 2 GB files which are sequentially named:

For example if Track 02 is 1 hour in duration it will appear as follows:

- hdv02.m2t(2 GB) - hdv02 is the file name for Track 02
- hdv02\_01.m2t (2 GB) - Each 2 GB section is given a sequential \_xx numeric extension
- hdv02\_02.m2t (2 GB)
- hdv02\_03.m2t (2 GB)
- hdv02\_04.m2t (2 GB)
- hdv02\_05.m2t (2 GB)
- hdv02\_06.m2t (77 MB) - The last file in the sequence is likely to be smaller than 2GB.

## Connecting to a PC / MAC

**NB: Although your PC / MAC may see the HDR-55 as an AVC compliant DV Device it is not intended to be operated as such.**

Connect the HDR-55 IEEE-1394 output to a PC or MAC. To set the HDR-55 into HDD Mode firstly press Menu button so that it is illuminated. You will see the display change to the HDD Mode Menu



HDD MODE  
CANCEL ENTER

Press the Next (▲) Button(right) to select ENTER and the display will show the HDD Enable Confirmation Screen



ENABLE HDD MODE?  
CANCEL ENTER

Press the Next (▲) Button(right) (right) again to confirm, after a few seconds HDD Mode will be enabled



PLEASE WAIT... HDD MODE ENABLED

The PC / MAC should recognise that an external IEEE-1394 (Firewire) HDD has been connected. The HDR-55 can be used just like any external drive.

To return the HDR-55 to Deck Mode either use "Safely Remove Hardware" with a PC, or with a MAC use "Eject" or Drag the HDR-55 Drive to "Trash". Once un-mounted the HDR-55 display will return to Track Display.

**HD MPEG2 BIT RATE Menu**

To select the HD MPEG2 encoding BIT RATE:

Press the Menu Button, to enter the menu mode



Press the FWD (▶▶) Button to navigate the menus until HD MPEG2 BIT RATE is displayed



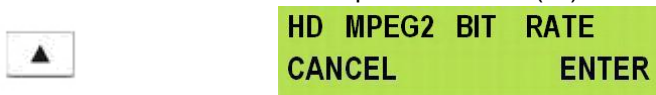
Press the Next (▲) Button(right) to enter the HD MPEG2 BIT RATE menu



Use the FWD(▶▶) or REW(◀◀) Button to select the desire bit rates (20,25,30,35,40,45,50,55,60)



To confirm your selection and exit the menu press the Next (▲) Button(right).



Then press the Menu Button to leave menu mode



For example, the table of 120 GB HDD is the reference of **Bit Rate mode** selection.

HDD Type	Bit Rate Mode	Maximum Recordable Time
120GB	20 Mbps	810 minutes 760
120GB	40 Mbps	405 minutes 390
120GB	60 Mbps	270 minutes 260

## SD MPEG2 BIT RATE Menu

To select the SD MPEG2 encoding BIT RATE:

Press the Menu Button, to enter the menu mode



HDD MODE  
CANCEL ENTER

Press the FWD (▶▶) Button to navigate the menus until SD MPEG2 BIT RATE is displayed



SD MPEG2 BIT RATE  
CANCEL ENTER

Press the Next (▲) Button(right) to enter the SD MPEG2 BIT RATE menu



SD MPEG2 BIT RATE  
CANCEL ENTER

Use the FWD(▶▶) or REW(◀◀) Button to select the desire bit rates (5,10,15)



5Mbps MPEG2  
CANCEL ENTER

To confirm your selection and exit the menu press the Next (▲) Button(right).



SD MPEG2 BIT RATE  
CANCEL ENTER

Then press the Menu Button to leave menu mode



TRACK 01 00:00:00:00  
PREVIOUS ■ NEXT

## SET 1080i H-RES. Menu

Press the Menu Button, to enter the menu mode



HDD MODE  
CANCEL ENTER

Press the FWD (▶▶) Button to navigate the menus until SET 1080i H-RES. is displayed.



SET 1080i H-RES.  
CANCEL ENTER

Press the Next (▲) Button(right) to enter the SET 1080i H-RES. menu



SET 1080i H-RES.  
CANCEL ENTER

Press the FWD (▶▶) Button to select either 1440 or 1920.



1440 ▶  
CANCEL SET

To confirm your selection and exit the menu press the Next (▲) Button(right).



SET 1080i H-RES.  
CANCEL ENTER

Then press the Menu Button to leave menu mode



TRACK 01 00:00:00:00  
PREVIOUS ■ NEXT

1080i is the shorthand name of a format of high definition video modes. 1080 is number of horizontal scan lines, and the letter i stands for interlaced.

1080i is a high-definition television (HDTV) video mode. The term usually assumes a widescreen aspect ratio of 16:9, implying a horizontal resolution of 1920 pixels and a frame resolution of 1920 × 1080 or about 2.07 million pixels.

## GPI Mode & Functions Menu

The HDR-55 can be set to receive either pulse or level GPI triggers, which can be set to activate Play / Pause or Rec / Pause.

To select the GPI Mode:

Press the Menu Button, to enter menu mode



HDD MODE  
CANCEL ENTER

Press the FWD (▶▶) Button to navigate the menus until SET GPI TRIGGER MODE is displayed



SET GPI TRIGGER MODE  
CANCEL ENTER

Press the Next (▲) Button(right) to enter the SET GPI TRIGGER MODE menu



PULSE TRIGGER ▶  
CANCEL SELECT

Press the FWD (▶▶) Button to select either Pulse Trigger or Level Trigger



PULSE TRIGGER ▶  
CANCEL SELECT

LEVEL TRIGGER ▶  
CANCEL SELECT

To confirm your selection and exit the menu press the Next (▲) Button(right).



PULSE TRIGGER ▶  
CANCEL SELECT

SET GPI TRIGGER MODE  
CANCEL ENTER

Then press the Menu Button to leave menu mode



SET GPI TRIGGER MODE  
CANCEL ENTER

TRACK 01 00:00:00:00  
PREVIOUS ■ NEXT

## Select the GPI Function

Press the Menu Button, to enter the menu mode

Press the FWD (▶▶) Button to navigate the menus until SET GPI FUNCTION is displayed



SELECT GPI FUNCTION  
CANCEL ENTER

Press the Next (▲) Button(right) to enter the SET GPI FUNCTION menu



PLAY/PLAY PAUSE ▶  
CANCEL SELECT

Press the FWD (▶▶) Button to select either Pulse Trigger or Level Trigger



PLAY/PLAY PAUSE ▶  
CANCEL SELECT

RECORD/RECORDPAUSE ▶  
CANCEL SELECT

To confirm your selection and exit the menu press the Next (▲) Button(right).



RECORD/RECORDPAUSE ▶  
CANCEL SELECT

SELECT GPI FUNCTION  
CANCEL ENTER

Then press the Menu Button to leave menu mode



SELECT GPI FUNCTION  
CANCEL ENTER

TRACK 01 00:00:00:00  
PREVIOUS ■ NEXT



### Set Date & Time Menu

To set the Date & Time on the HDR-55

Press the Menu Button, to enter menu mode



HDD MODE  
CANCEL ENTER

Press the REW (◀◀) Button to navigate the menus until SET DATE & TIME is displayed



SET DATE & TIME  
CANCEL ENTER

Press the Next (▲) Button(right) to enter the SET Date & Time menu



16 Feb 2007 12:00  
CANCEL SET

You will see a flashing cursor on the date value.

To set the date use the Play/Pause Button to increase the value or the Stop Button to decrease the value



Increases Value



Decreases Value

Use the FWD (▶▶) Button to move the cursor to the next column to the right i.e. Month / Year / Hours / Minutes or the REW (◀◀) Button to move the cursor back to the left.



Moves the cursor to the right



Moves the cursor to the left

Once you have set the date & time press the Next (▲) Button(right) to exit the menu



16 Oct 2007 14:30  
CANCEL SET

SET DATE & TIME  
CANCEL ENTER

Then press the Menu Button to leave menu mode



SET DATE & TIME  
CANCEL ENTER

TRACK 01 00:00:00:00  
PREVIOUS ■ NEXT

### Format Hard Disk Menu

Format Hard Disk will remove all tracks from the hard drive.

Press the Menu Button, to enter menu mode



HDD MODE  
CANCEL                      ENTER

Press the REW (◀◀) Button to navigate the menus until FORMAT HARD DISK is displayed



FORMAT HARD DISK  
CANCEL                      ENTER

Press the Next (▲) Button(right) to enter the FORMAT HARD DISK menu



ARE YOU SURE ?  
CANCEL                      ENTER

You will see ARE YOU SURE? displayed

Press the Next (▲) Button(right)again to confirm that you want to format the hard disk.



FORMATTING HARD DISK  
WAITING .....

FORMAT DONE  
REBOOT SYSTEM

After a few seconds the HDR-55 will reboot and the display will return to normal

INITIALIZING.....  
MAIN SYSTEM

TRACK 01                      00:00:00:00  
PREVIOUS                      ■                      NEXT

### Erase Track Menu

Erase Track is used for deleting individual tracks from the HDR-55.

Press the Menu Button, to enter menu mode



HDD MODE  
CANCEL                      ENTER

Press the REW (◀◀) Button to navigate the menus until ERASE TRACK is displayed



ERASE TRACK  
CANCEL                      ENTER

Press the Next (▲) Button(right) to enter the ERASE TRACK menu



TRACK 01                      00:00:10:15  
CANCEL                      ERASE

Use the FWD (▶▶) or REW (◀◀) Button to select the track that you want to erase - (Track 01 in this case)



TRACK 01                      00:00:10:15  
CANCEL                      ERASE

Press the Next (▲) Button(right) to erase the selected track - The track duration will return to 00:00:00:00



TRACK 01                      00:00:10:15  
CANCEL                      ERASE

TRACK 01                      00:00:00:00  
CANCEL                      ERASE

Then press the Menu Button to leave menu mode



TRACK 01                      00:00:00:00  
CANCEL                      ERASE

TRACK 01                      00:00:00:00  
PREVIOUS                      ■                      NEXT

## HDD Surface Scan Menu

Surface scan is a utility which checks the disc surface for errors and bad sectors. It is not generally necessary to use Surface Scan unless your HDR-55 is not performing correctly, or you have changed the HDD.

To run Surface Scan press the Menu Button to enter menu mode.



HDD MODE  
CANCEL ENTER

Press the REW (◀◀) Button to navigate the menus until SCAN HDD SURFACE is displayed



HDD SURFACE SCAN  
CANCEL ENTER

Press the Next (▲) Button(right) twice to start the HDD Surface Scan.



ARE YOU SURE ?  
CANCEL ENTER

HDD SURFACE SCAN  
SCANNING > 1% DONE

The progress of the scan will appear in the LCD display. Once complete the Surface Scan Done message will appear. Press the Next (▲) Button(right) to exit the surface scan.

HDD SURFACE SCAN  
SCANNING > 1% DONE

SURFACE SCAN DONE !  
CHECK RESULT .T XT OK

A txt file called Result will have been created in the root directory of the HDR-55 HDD, this can be accessed via a PC, by connecting the HDR-55 as a HDD.

## Playing a Track

It is playback M2T tracks to analogue monitors or recorders via the HDMI video outputs.

Use the Previous (▲) / Next (▲) Button(right)s to select the track you want to play, and then press the Play (▶||) Button.



It is also possible to set the HDR-55 to loop play. In loop play the track will looped until stopped. To set up loop play press the Menu Button to enter menu mode and then the FWD (▶▶) Button until SETUP LOOP PLAY is displayed.



Press the Next (▲) Button(right) to enter the setup loop play menu, and then press the FWD (▶▶) Button to select ENABLE



Press the Next (▲) Button(right) to select SET and then press the Menu Button to return to track display.



When you press play the selected track will start playing, and will loop until the Stop (■) Button is pressed. To cancel loop playback, follow the above procedure but select disable instead of enable.

## Recording a track

Press the Video Input Button so that it is illuminated. You should see the video source on your output monitor



Use the Next / Previous Buttons to select an empty track from the HDR-55 track list, one that shows a duration of 00:00:00:00 in the LCD display.



Press both the Record and Play/Pause Buttons simultaneously and the HDR-55 should start recording.



If it does not start recording check the following:

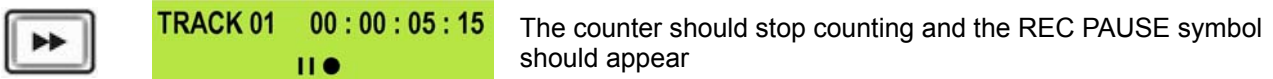
There is an video input present.

The Video Input Button is illuminated

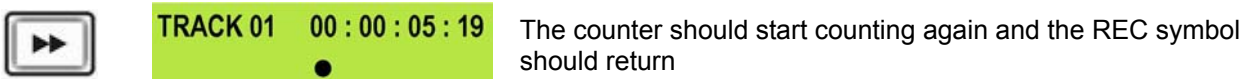
The track you have selected on the HDR-55 is empty. The counter next to the TrackNo on the LCD display should b showing 00:00:00:00.

There is some available space on the HDR-55 Hard Disk - Go to the FREE SPACE Menu and check that the HDR-55 is not full.

During record you can pause the HDR-55 by pressing the Play/Pause button, the counter on the LCD display will stop.



To release pause press the Play/Pause button again.



***N.B. It is not possible to stop recording and then restart on the same track, once a track has been stopped you must select a new empty track from the HDR-55 to start recording again.***

## Connecting to a Computer

Files that have been recorded onto the HDR-55 can be transferred directly to a PC or MAC via the IEEE-1394 (iLink, FireWire) port.

The files appear in the root directory of the HDR-55 hard disk, and are numbered with the track number that appears in the LCD display when you are recording or playing back the track.

The HDR-55 uses a FAT32 file structure, so large tracks are broken down into 2 GB files which are sequentially named:

For example if Track 02 is 1 hour in duration it will appear as follows:

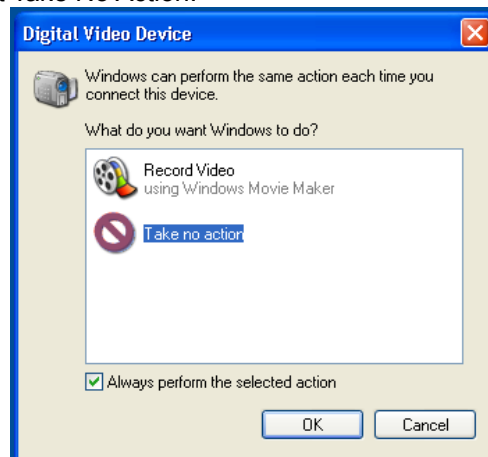
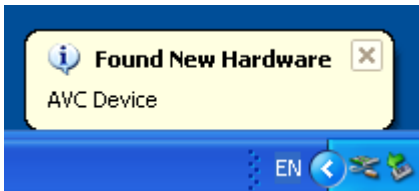
hdv02.m2t (2 GB) - hdv02 is the file name for Track 02  
 hdv02\_01.m2t (2 GB) - Each 2 GB section is given a sequential \_xx numeric extension  
 hdv02\_02.m2t (2 GB)  
 hdv02\_03.m2t (2 GB)  
 hdv02\_04.m2t (2 GB)  
 hdv02\_05.m2t (2 GB)  
 hdv02\_06.m2t (77 MB) - The last file in the sequence is likely to be smaller than 2GB.

Once transferred to a PC / MAC files can be dropped onto a timeline, in a suitable NLE application, and they will playback seamlessly.

## Connecting to a PC

**NB: Although a PC may see the HDR-55 as an AVC compliant DV Device it is not intended to be operated as such.**

If your PC sees an AVC DV Device select Take No Action.



Connect the HDR-55 IEEE-1394 output to a PC.

To set the HDR-55 into HDD Mode firstly press the Menu button so that it is illuminated.

You will see the display change to the HDD Mode Menu



HDD MODE  
CANCEL ENTER

Press the Next (▲) Button(right) to select ENTER and the display will show the HDD Enable Confirmation Screen



ENABLE HDD MODE?  
CANCEL ENTER

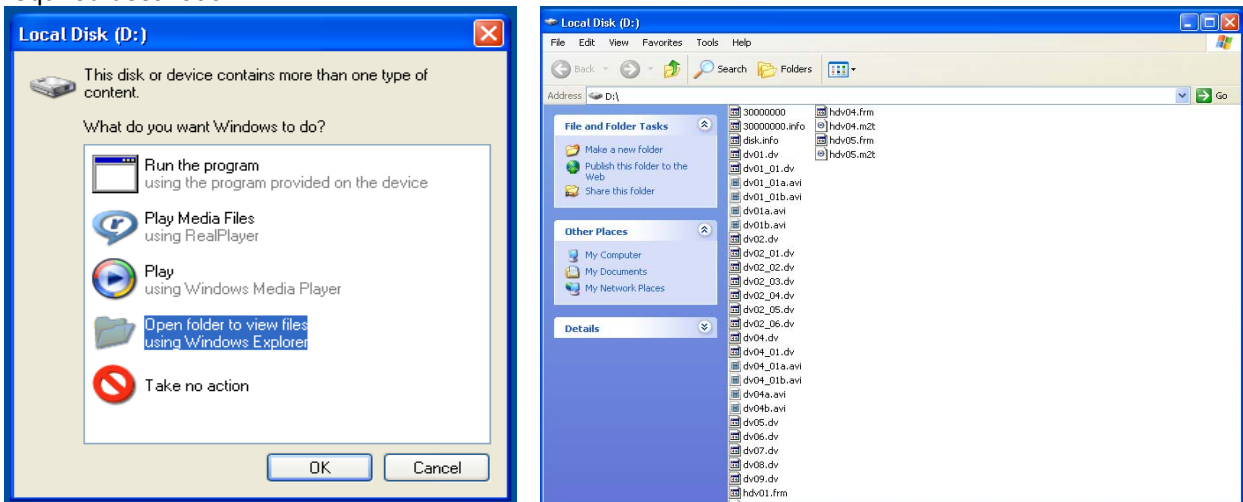
Press the Next (▲) Button(right) again to confirm, after a few seconds HDD Mode will be enabled



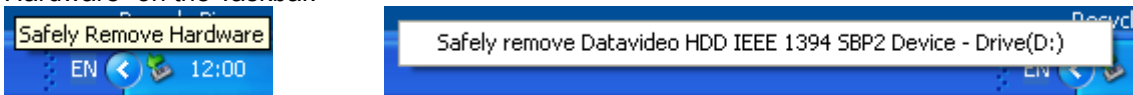
PLEASE WAIT...

HDD MODE ENABLED

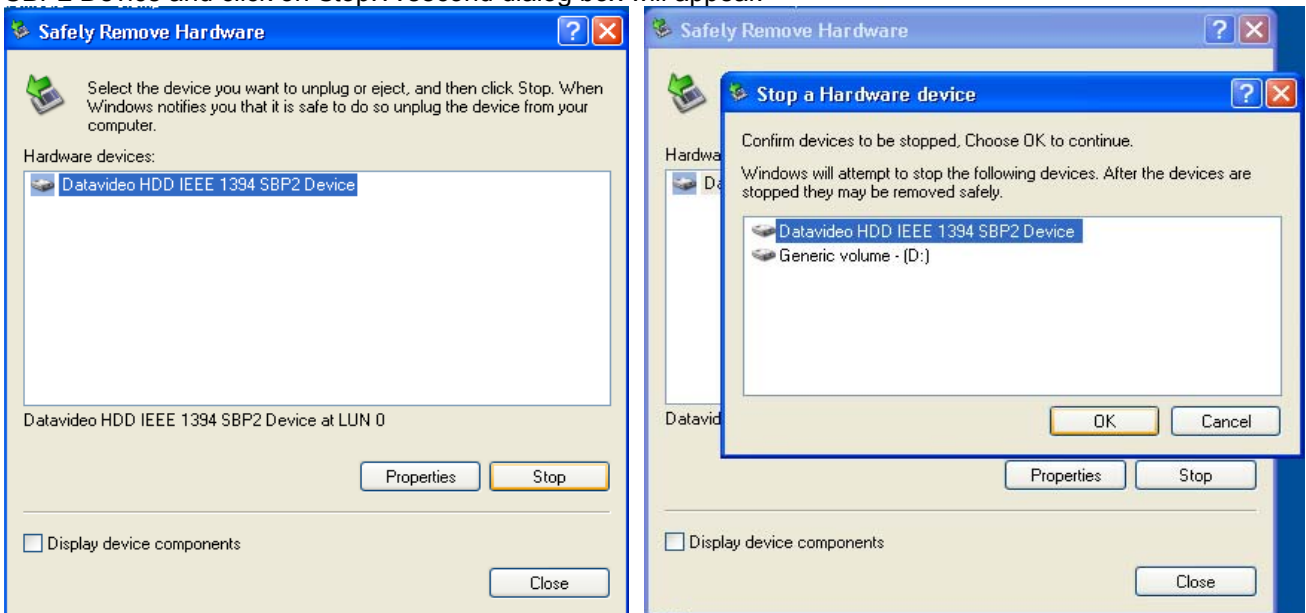
The PC should recognise that an external IEEE-1394 (Firewire)HDD has been connected. Select Open Folder to View Files. The drive should also appear in My Computer as an internal HDD. Once connected the HDR-55 can be used just like any HDD. You can select the required files and drag and drop them to the required destination.



To return the HDR-55 to Deck Mode use “Safely Remove Hardware”. You will find “Safely Remove Hardware” on the Taskbar.



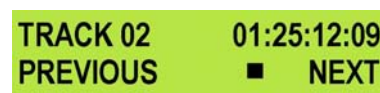
Double click on Safely Remove Hardware and the dialog box will appear, select the Datavideo HDD IEEE SBP2 Device and click on Stop. A second dialog box will appear.



Select Datavideo HDD IEEE SBP2 Device and click on OK. After a few seconds a “Safe To Remove Hardware” message should appear above the Taskbar. You can then disconnect the HDR-55.



Once un-mounted from the PC the HDR-55 display will leave HDD Mode and return to Track Display.



## Connecting to a MAC

**NB: Although a MAC may see the HDR-55 as an AVC compliant DV Device it is not intended to be operated as such.**

Connect the HDR-55 IEEE-1394 output to a MAC.

To set the HDR-55 into HDD Mode firstly press the Menu button so that it is illuminated.

You will see the display change to the HDD Mode Menu



HDD MODE  
CANCEL ENTER

Press the Next (▲) Button(right) to select ENTER and the display will show the HDD Enable Confirmation Screen



ENABLE HDD MODE?  
CANCEL ENTER

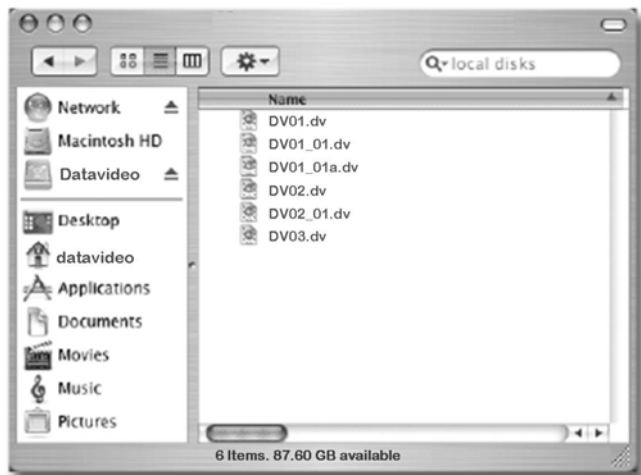
Press the Next (▲) Button(right) again to confirm, after a few seconds HDD Mode will be enabled



PLEASE WAIT...

HDD MODE ENABLED

The MAC should see the HDR-55 as a HDD and the files will appear in the root directory of the drive.



You can select the required files and drag and drop them to the required destination.

To un-mount the HDR-55 from your MAC either "Eject" the drive, or drag it to the Trash Can. Once the HDR-55 is un-mounted from the MAC the LCD display will return to normal.

HDD MODE ENABLED

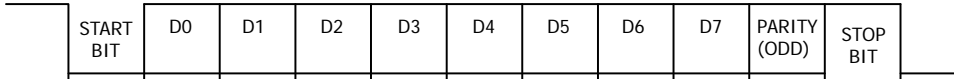
TRACK 02 01:25:12:09  
PREVIOUS ■ NEXT



# RS-422 Protocol Reference V1.0

## 1. Interface Overview

1. Conforming to EIA RS-422A.
2. Full duplex communications channel is utilized.
3. Data is transmitted asynchronously, bit serial, word serial with data exchange between devices.
4. Standard transmission rate on the interface bus is 38400 bits per seconds (bps)
5. The data word utilized by the interface system is as follows :



6. 1 Start bit + 8 Data bits + 1 Parity bit + 1 Stop bit. Odd Parity

ODD parity : The total of "1"s in D0+D1+ . . . D7+PARITY equals an odd number.

## 2. Command Block Format

The data communication is composed of the **CMD-1/DATA COUNT** byte, the **CMD-2** byte, optional **DATA** bytes and the **CHECKSUM** byte. Commands are transmitted in order from the MSB (Most Significant Byte) to the LSB (Least Significant Byte). This means that when using the examples in this manual, the order in which the bytes are read is the same order in which they are transmitted. When the **DATA COUNT** nibble is 0, no **DATA** bytes are transmitted or required (the **CMD-1/DATA COUNT** byte, **CMD-2** byte and **CHECKSUM** byte are still transmitted). When the **DATA COUNT** nibble is not 0, the number of **DATA** bytes transmitted must correspond with the **DATA COUNT**. These bytes are inserted between the **CMD-2** byte and **CHECKSUM** byte.

### COMMAND BLOCK FORMAT

The data communication between the controller and the device is performed as follows:

Name	CMD-1	Data Count	CMD-2	Data 0~15 (per Data Count)	Checksum
Nibble	MSN	LSN			
Size	1 Byte		1 Byte	0..15 Byte(s)	1 Byte

- MSN stands for Most Significant Nibble (4 bits)
- LSN stands for Least Significant Nibble (4 bits)

### COMMAND CONTENTS

#### CMD-1:

This is the first (Most Significant) nibble of the first byte of the command. The **DATA COUNT** (below) fills the lower (Least Significant) nibble. It (**CMD-1**) indicates the command or return group to which the command belongs as per the table below

CMD-1	Function	Initiator
0x	System Control	Controller
1x	System Control Return	Device (HDR-45/55)
2x	Transport Control	Controller
4x	Preset And Select Control	Controller
6x	Sense Request	Controller
7x	Sense Return	Device (HDR-45/55)
Ex	DVR Control	Controller
Fx	DVR Return	Device (HDR-45/55)

#### DATA COUNT:

This is the second (Least Significant) nibble of the first byte of the command. The upper (Most Significant) nibble is filled by the **CMD-1** (above). It indicates the number of data bytes (0-15) that are required to be inserted between the **CMD-2** byte and the **CHECKSUM** byte.

#### CMD-2:

Designates the exact command within the section specified by **CMD-1**.

#### DATA 0..15:

If the command requires extended data, the **DATA COUNT** will be set to between 1 and 15 (a 0 indicates that no extra data is required). These bytes will be placed here.

#### CHECKSUM:

This byte is used to check the data for communication errors. To calculate the checksum, each byte of the command (**CMD-1+DATA COUNT**, **CMD-2**, and any **DATA BYTES**) are added together. The least significant 8 bits (1 byte) are then truncated to create a 1-byte checksum.

*I.e.: The command "61.0C.03" becomes*

	<i>MSB</i>	<i>LSB</i>	
	0110	0001	(=61)
	0000	1100	(=0C)
+)	0000	0011	(=03)
	0111	0001	(=70)

*CHECKSUM = "70"*

*Therefore, the complete command is "61.0C.03.70"*

### 3. Connector Pin Assignment

Interface : 9 pin D-Sub female

The RS-422 pin assignment of the Controller and HDR-45/55 is shown in the following table:

<i>Pin</i> \ <i>Signal</i>	<i>Controller</i>	<i>HDR-45/55</i>
1	Frame Ground	Frame Ground
2	Receive A(RX-)	Transmit A(TX-)
3	Transmit B(TX+)	Receive B(RX+)
4	Transmit Common	Receive Common
5	Spare	Spare
6	Receive Common	Transmit Common
7	Receive B(RX+)	Transmit B(TX+)
8	Transmit A(TX-)	Receive A(RX-)
9	Frame Ground	Frame Ground

The RS-232 pin assignment of the Controller and HDR-45/55 is shown in the following table:

<i>Pin</i> \ <i>Signal</i>	<i>Controller</i>	<i>HDR-45/55</i>
1	-	-
2	Receive (RX)	Transmit (TX)
3	Transmit (TX)	Receive (RX)
4	-	-
5	GND	GND
6	-	-
7	-	-
8	-	-
9	-	-

## 4. Communication Protocol

- All communications between the CONTROLLER and the DEVICE will be under the direct supervision of the CONTROLLER. When the DEVICE (HDR-45/55) receives the COMMAND from CONTROLLER, the following COMMAND is returned.

ACK:	In case that the DEVICE receives a COMMAND not requiring data
COMMAND+DATA:	In case that the DEVICE receives a COMMAND requiring data
NAK+ERROR DATA:	In case that a communication error is detected or an undefined COMMAND is received

- The CONTROLLER must not transmit additional COMMAND blocks to a DEVICE (HDR-45/55) prior to response to a previous COMMAND block.
- The CONTROLLER must transmit of bytes in a COMMAND block for with intervals less than 10 milliseconds. If a DEVICE (HDR-45/55) detects an interruption of a byte in a COMMAND block that exceeds 10 milliseconds, it executes a TIME-OUT error sequence, voids the receiving COMMAND block, and transmit a NAK (TIME OUT).
- When a DEVICE (HDR-45/55) receives a COMMAND block from the CONTROLLER, the DEVICE must transmit a response within 9 milliseconds. Therefore if the CONTROLLER cannot receive the appropriate response from the DEVICE within 10 milliseconds after transmitting the COMMAND block the CONTROLLER detects a communication error, and must execute an appropriate process.
- When a DEVICE (HDR-45/55) detects a communication error, it must immediately transmit a NAK to the CONTROLLER. (The content of an error is shown on the COMMAND tables.) When the CONTROLLER receives a NAK, if must immediately stop transmission of the block. The DEVICE must not accept a subsequent command within 10 milliseconds after that (except NAK-UNDEFINED command) and must execute a necessary process.

## 5. Command Table (without Checksum byte)

Command	Name	Response	Name
10h 01h	Acknowledge (ACK) – command succeeded		
12h 11h	Device Return		
11h 12h	Negative Acknowledge (NAK) – command failed		
00h 11h	Device Type Request	12h 11h	Device Type Response
20h 00h	Stop	10h 01h	ACK
20h 01h	Play	10h 01h	ACK
20h 02h	Record	10h 01h	ACK
20h 10h	Fast Forward	10h 01h	ACK
2xh 13h	Shuttle Forward	10h 01h	ACK
21h 13h 00h	Pause	10h 01h	ACK
20h 20h	Fast Rewind	10h 01h	ACK
2xh 23h	Shuttle Rewind	10h 01h	ACK
40h 50h	Next Track	10h 01h	ACK
40h 51h	Previous Track	10h 01h	ACK
40h 54h	Delete Current Track	10h 01h	ACK
40h 62h	Enable HDD mode	10h 01h	ACK
41h 52h nnh mmh	Select Track (Track 01 ~ 99)	10h 01h	ACK
42h 52h nnh mmh	Select Track (Track 001 ~ 999)	10h 01h	ACK
41h 53h nnh	Select Video Input Source	10h 01h	ACK
41h 61h nnh	Select Audio Input Source	10h 01h	ACK
61h 0Ch 01h	Current Time Sense	74h 04h	Current Time
61h 20h	Status Sense	7xh 20h	Current Status
E0h 01h	Get Length of Current Track	F4h 01h	Length of Track
E0h 02h	Current Video Source Sense	F1h 02h	Video Source Number
E0h 03h	Current Audio Source Sense	F1h 03h	Audio Source Number
E0h 04h	Current Track Number Data Sense (Track 01 ~ 99)	F1h 04h	Track Number (BCD)
E0h 05h	Current Track Number Data Sense (Track 001 ~ 999)	F2h 05h	Track Number (BCD)
E6h 06h	Current Encode Bit Rate Sense	F1h 06h	Bit Rate
E2h 10h 01h nnh	Set Loop Play	10h 01h	ACK
E3h 10h AAh 55h 01h	Format Hard Disk	10h 01h	ACK

## 6. Detailed Description of Commands

### 00h 11h : DEVICE TYPE REQUEST

Send: 00h 11h 11h  
Return: 12h 11h B0h 12h E4h (HDR-45/55)

### 20h 00h : STOP

Send: 20h 00h 20h  
Return: 10h 01h 11h

### 20h 01h : PLAY

Send: 20h 01h 21h  
Return: 10h 01h 11h

### 20h 02h : RECORD

Send: 20h 02h 22h  
Return: 10h 01h 11h

### 20h 10h : FAST FORWARD

Send: 20h 10h 30h  
Return: 10h 01h 11h

### 2xh 13h : SHUTTLE FORWARD

Send: 21h 13h 01h 35h  
Return: 10h 01h 11h

### 21h 13h 00h : PAUSE

Send: 21h 13h 00h 34h  
Return: 10h 01h 11h

### 20h 20h : FAST REWIND

Send: 20h 20h 40h  
Return: 10h 01h 11h

### 2xh 23h : SHUTTLE REWIND

Send: 21h 23h 01h 45h  
Return: 10h 01h 11h

### 40h 50h : NEXT TRACK

Send: 40h 50h 90h  
Return: 10h 01h 11h

### 40h 51h : PREVIOUS TRACK

Send: 40h 51h 91h  
Return: 10h 01h 11h

### 40h 54h : DELETE CURRENT TRACK

Send: 40h 54h 94h  
Return: 10h 01h 11h

### 40h 62h : ENABLE HDD MODE

Send: 40h 62h A2h  
Return: 10h 01h 11h

### 41h 52h NNh : SELECT TRACK NUMBER (Track 01 ~ 99)

NN = Track Number  
Send: 41h 52h 01h 94h (Select Track 1)  
Return: 10h 01h 11h  
Send: 41h 52h 10h A3h (Select Track 16)  
Return: 10h 01h 11h

### 42h 52h NNh MMh : SELECT TRACK NUMBER (Track 001 ~ 999)

NN = Track Number (Hex) % 100h  
MM = Track Number (Hex) / 100h  
Set track number to 900(384h):  
NN = 384h % 100h = 84h (quotient)  
MM = 384h / 100h = 03h  
Send: 42h 52h 84h 03h 1Bh (Select Track 900)  
Return: 10h 01h 11h  
Set track number to 168(A8h):  
NN = A8h % 100h = A8h (quotient)  
MM = A8h / 100h = 00h  
Send: 42h 52h A8h 00h 3Ch (Select Track 168)  
Return: 10h 01h 11h

### 41h 53h NNh : SELECT VIDEO INPUT SOURCE

NN = Video Source, 1 = SDI, 2 = Decode MPEG-2  
Send: 41h 53h 01h 95h (SDI input)  
Return: 10h 01h 11h  
Send: 41h 53h 02h 96h (Decode MPEG-2)

*Return: 10h 01h 11h*

**41h 61h NNh : SELECT AUDIO INPUT SOURCE**

NN = Audio Source, 0 = Analog audio, 1 = SDI Embedded Audio

*Send: 41h 61h 00h A2h (Analog audio input)*

*Return: 10h 01h 11h*

*Send: 41h 61h 01h A3h (SDI Embedded Audio)*

*Return: 10h 01h 11h*

**41h 63h NNh : SELECT SD VIDEO ASPECT RATIO**

NN = Aspect Ratio, 2 = 4:3, 3 = 16:9, 0, 1 = Reserved

*Send: 41h 63h 02h A6h (SD video aspect ratio = 4:3)*

*Return: 10h 01h 11h*

*Send: 41h 63h 03h A7h (SD video aspect ratio = 16:9)*

*Return: 10h 01h 11h*

**61h 0Ch 01h : CURRENT TIME SENSE**

*Send: 61h 0Ch 01h 6Eh*

*Return: 74h 04h 01h 02h 03h 04h 82h (Time code 04:03:02:01)*

**61h 20h : STATUS SENSE**

DATA-1 Most Significant Nibble = 1st status data byte number to be returned

DATA-1 Least Significant Nibble = number of status data bytes to be returned

*Send: 61h 20h 03h 84h (return data byte 0, 1, and 2)*

*Return: 73h 20h 00h 81h 80h 94h*

*Send: 61h 20h A1h 22h (return the current track number)*

*Return: 71h 20h 99h 2Ah (Current track number is 99)*

**E0h 01h : TRACK LENGTH SENSE**

*Send: E0h 01h E1h*

*Return: F4h 01h 29h 41h 56h 00h B5h (Track Length 00:56:41:29)*

**E0h 02h : CURRENT VIDEO SOURCE SENSE**

1 = SDI, 2 = Decode MPEG-2

*Send: E0h 02h E2h*

*Return: F1h 02h 01h F4h (SDI Input)*

*Send: E0h 02h E2h*

*Return: F1h 02h 02h F5h (Decode MPEG-2)*

**E0h 03h : CURRENT AUDIO SOURCE SENSE**

0 = Analog audio, 1 = SDI Embedded Audio

*Send: E0h 03h E3h*

*Return: F1h 03h 00h F4h (Analogue Input)*

**E0h 04h : CURRENT TRACK NUMBER SENSE**

*Send: E0h 04h E4h*

*Return: F1h 04h 17h 0Ch (Current Track Number is 17<BCD>)*

**E0h 05h : CURRENT TRACK NUMBER SENSE (Track 001 ~ 999)**

*Send: E0h 05h E5h*

*Return: F2h 05h 17h 01h 0Fh (Current Track Number is 117 <BCD>)*

**E0h 06h : CURRENT ENCODE BIT RATE SENSE**

*Send: E0h 06h E6h*

*Return: F1h 06h 3Ch 33h (I-Frame Only = Disable, Current Bit Rate = 60Mbps)*

**E2h 10h 01h NNh: Set Loop Play**

NN = Disable (00h) or Enable (01h)

*Send: E2h 10h 01h 00h F3h (Disable Loop Play)*

*Return: 10h 01h 11h*

*Send: E2h 10h 01h 01h F4h (Enable Loop Play)*

*Return 10h 01h 11h*

**E3h 10h AAh 55h 01h : Format Hard Disk**

*Send: E3h 10h AAh 55h 01h F3h*

*Return: 10h 01h 11h*

## 7. Return Data

### 10h 01h : ACK

When a command from the CONTROLLER is received normally, the DEVICE returns this command as acknowledgment.

### 11h 12h : NAK

When a communication error is detected or an undefined COMMAND is received, the DEVICE returns this command as not-acknowledgment.

BIT-7 to BIT-0 of DATA-1 will be set in accordance with the contents.

[DATA-1]

BIT-7	BIT-6	BIT-5	BIT-4	BIT-3	BIT-2	BIT-1	BIT-0
TIME OUT	FRAMING ERROR	OVERRUN ERROR	PARITY ERROR	INHIBIT	CHECKSUM ERROR	SOFTWARE OVERRUN	UNDEFINED COMMAND

### 12h 11h : DEVICE TYTPE

The "00h 11h : DEVICE TYPE REQUEST" command is used for asking the specifications of the HDR-45/55 used as DEVICE. When the DEVICE receives this command, it attaches 2-bytes specification data to "12h 11h : DEVICE TYPE" and sends the information to the CONTROLLER.

HDR-45/55: 12h 11h B0h 12h

### 74h 04h : Current Time Code (BCD)

	Bit 7	Bit 6	Bit 5	Bit 4	Bit 3	Bit 2	Bit 1	Bit 0
Data 0	0	0	Tens of Frames		Frames			
Data 1	0	Tens of Seconds			Seconds			
Data 2	0	Tens of Minutes			Minutes			
Data 3	0	0	Tens of Hours		Hours			

Send: 61h 0Ch 01h 6Eh

Return: 74h 04h 01h 02h 03h 04h 82h (Time code 04:03:02:01)

### F4h 01h : Length of Current Track (BCD)

	Bit 7	Bit 6	Bit 5	Bit 4	Bit 3	Bit 2	Bit 1	Bit 0
Data 0	0	0	Tens of Frames		Frames			
Data 1	0	Tens of Seconds			Seconds			
Data 2	0	Tens of Minutes			Minutes			
Data 3	0	0	Tens of Hours		Hours			

Send: E0h 01h E1h

Return: F4h 01h 29h 41h 56h 00h B5h (Track Length 00:56:41:29)

### F1h 04h : Current Track Number (BCD) (Track 01 ~ 99)

	Bit 7	Bit 6	Bit 5	Bit 4	Bit 3	Bit 2	Bit 1	Bit 0
Data 0	Tens of Track Number (BCD)				Track Number (BCD)			

Send: E0h 04h E4h

Return: F1h 04h 17h 0Ch (Current Track Number is 17 <BCD>)

### F2h 05h : Current Track Number (BCD) (Track 001 ~ 999)

	Bit 7	Bit	Bit 5	Bit 4	Bit 3	Bit 2	Bit 1	Bit 0
Data 0	Tens of Track Number (BCD)				Track Number (BCD)			
Data 1	0				Hundreds of Track Number (BCD)			

Send: E0h 05h E5h

Return: F2h 05h 17h 01h 0Fh (Current Track Number is 117 <BCD>)

### F1h 06h : Current Bit Rate

	Bit 7	Bit 6	Bit 5	Bit 4	Bit 3	Bit 2	Bit 1	Bit 0
Data 0	I-Frame Only	Current Encode Bit Rate (Hex)						

Bit 7, I-Frame Only : 0 = Disable, 1 = Enable

Bit 6 ~ Bit 0 : Current Encode Bit Rate (Hex)

Send: E0h 06h E6h

Return: F1h 06h 1Eh 15h (I-Frame Only Disable, Current Bit rate = 30Mbps)

Send: E0h 06h E6h

Return: F1h 06h B2h A9h (I-Frame Only Enable, Current Bit rate = 50Mbps)

If I-Frame Only is enable then Bit Rate will be fixed at

HD: 100Mbps, SD: 50Mbps



## 8. Status return data

7xh 20h :

	Bit 7	Bit 6	Bit 5	Bit 4	Bit 3	Bit 2	Bit 1	Bit 0
Data 0	Busy		Disk Out			Hardware Error		Local
Data 1	Standby On		Stop	Eject	Rewind	Fast Forward	Record	Play
Data 2			Shuttle			Reverse	Still	
Data 3								
Data 4								
Data 5								
Data 6		Lamp Still	Lamp Forward	Lamp Reverse				
Data 7								
Data 8				Disk Full				Record Inhibit
Data 9	SD Aspect Ratio		HDV Type		HDV Monitor	GPI Mode	GPI Function	Loop Play
Data 10	Tens of Track Number(BCD) 0~9				Track Numbers(BCD) 0~9			
Data 11	0				Hundreds of Track Number (BCD) 0~9			
Data 10								
Data 13								
Data 14			SDI Embedded	Analogue Audio		Decode MPEG-2	Encode SDI	
Data 15								

### Data-0

BIT-0 **LOCAL**

This bit will be set to 1 when the device will only accept commands from the front panel, and not the controller (RS-232/422).

BIT-2 **HARDWARE ERROR**

This bit will set to 1 when a hardware error occurs in the device.

BIT-5 **DISK OUT**

The removable media is not present in the device.

BIT-7 **BUSY**

This bit is set to 1 if the device is currently unable to accept motion commands. Sense commands will be accepted.

### Data-1

BIT-0 **PLAY**

This bit will be set to 1 when the device goes into the PLAY mode.

BIT-1 **RECORD**

This bit will set to 1 when the device goes into the REC mode.

BIT-2 **FAST FORWARD**  
This bit will be set to 1 when the device goes into the FAST FORWARD mode.

BIT-3 **REWIND**  
This bit will be set to 1 when the device goes into the FAST REWIND mode.

BIT-4 **EJECT**  
This bit will be set to 1 when the device EJECTs hard disk.

BIT-5 **STOP**  
This bit will be set to 1 when the device is in STOP mode.

#### **Data-2**

BIT-1 **STILL**  
This bit will be set to 1 when the device is paused and displays the current frame.

BIT-2 **REVERSE**  
This bit will be set to 1 when the device is outputting its material in reverse of the normal order. When moving in the normal direction, it will be 0.

BIT-5 **SHUTTLE**  
This bit will be set to 1 when the device goes into SHUTTLE command mode.

#### **Data-6**

BIT-4 **LAMP REVERSE**  
This bit will be set to 1 when the device is searching backwards.

BIT-5 **LAMP FORWARD**  
This bit will be set to 1 when the device is searching forwards.

BIT-6 **LAMP STILL**  
This bit will be set to 1 when the device has finished searching.

#### **Data-8**

BIT-0 **TRACK IS NOT EMPTY (REC INHIBIT)**  
If this bit is set to 1, record command will be ignored. (it is not an empty track)

BIT-4 **DISK FULL**  
Set to 1 if the device has reached the end of hard disk.

#### **Data-9**

BIT-0 **LOOP PLAY STATUS**  
If this bit is set to 1, Loop Play is enable

BIT-1 **GPI FUNCTION**  
0: RECORD/RECORD PAUSE  
1: PLAY/PLAY PAUSE

BIT-2 **GPI MODE**  
0: Edge/Pulse Trigger  
1: Level Trigger

BIT-3 **HDV MONITOR**  
This bit will set to 1 when the HDV monitor mode is enable

BIT-4~5 **HDV TYPE**  
00: 1080 59i  
01: 1080 50i  
10: 720 59p  
11: 720 50p

BIT-6~7 **SD ASPECT RATIO**  
00: Reserved  
01: Reserved  
10: 4:3  
11: 16:9

#### **Data-10**

BIT-0 ~ 3 **TRACK NUMBER**  
Track number in BCD.

BIT-4 ~ 8 **TENS OF TRACK NUMBER**  
Tens of Track number in BCD

**Data-11**

BIT-0 ~ 3 **HUNDREDS OF TRACK NUMBER**  
Hundreds of Track number in BCD

BIT-4 ~ 7 **0**

**Data-14**

BIT-1 **ENCODE SDI**  
This bit will be set to 1 if the device is encoding SDI source.

BIT-2 **DECODE MPEG-2**  
This bit will be set to 1 if the device is decoding MPEG-2.

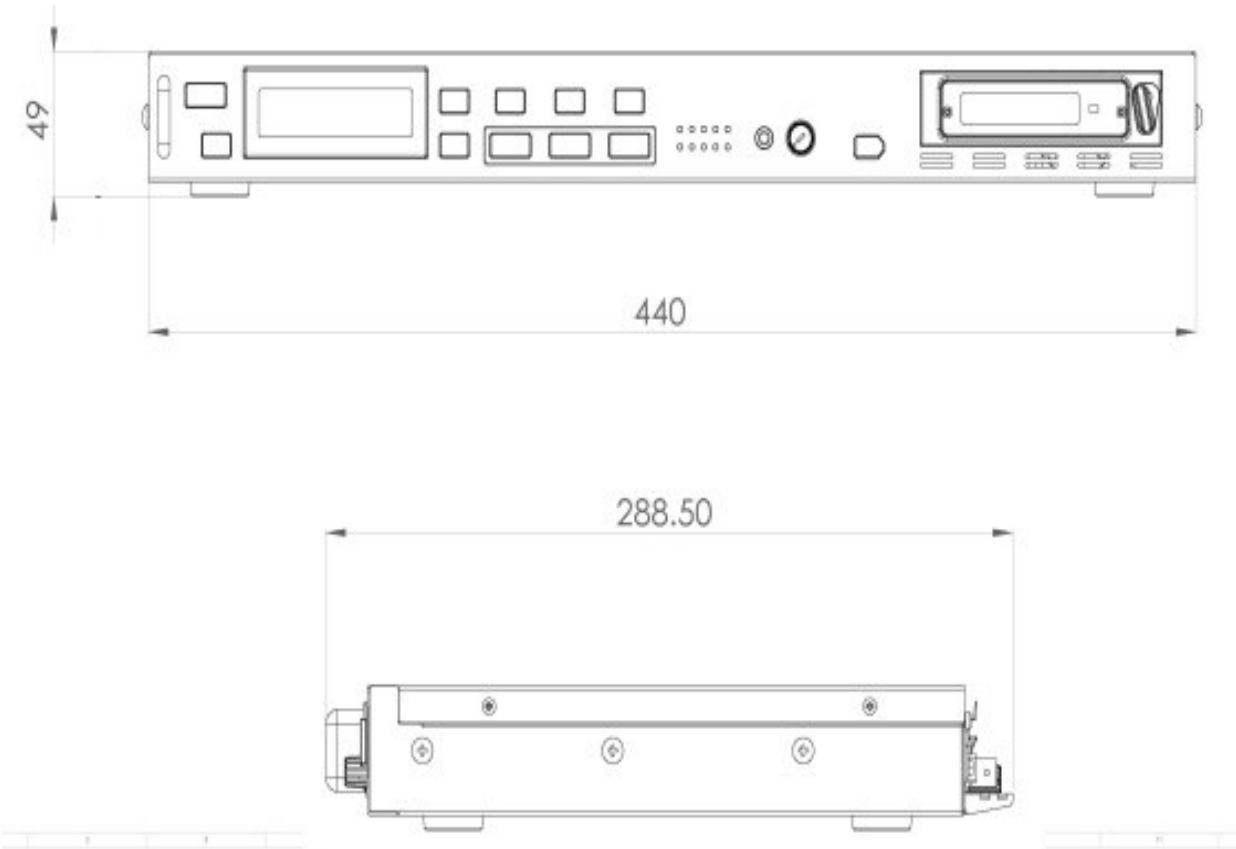
BIT-4 **ANALOGUE AUDIO**  
This bit will be set to 1 if the audio input source is analogue.

BIT-5 **SDI EMBEDDED**  
This bit will be set to 1 if the audio input source is SDI embedded audio.

**Revision History:**

Rev.	Description	Date	FP Rev.	MB Rev.
1.0	1. Initial release		V1.0.0	V1.5.0

**Dimension**



## Specifications

<b>Inputs Interface</b>	<ul style="list-style-type: none"> <li>• 1x BNC connector for HD/SD-SDI input</li> <li>• 2x XLR connector for audio input</li> </ul>
<b>Outputs Interface</b>	<ul style="list-style-type: none"> <li>• 1x BNC connector for HD/SD-SDI pass through output</li> <li>• 1x BNC connector for SDI output</li> <li>• 1x HDMI connector for HDMI output (1.1)</li> </ul>
<b>Record format</b>	<ul style="list-style-type: none"> <li>• Video : MPEG2 (.M2T)</li> <li>• Audio : MPEG1 Layer2</li> <li>• Audio Bit rate : 384Kbps</li> <li>• Audio Resolution : 16bit</li> </ul>
<b>Other Interface</b>	<ul style="list-style-type: none"> <li>• 1x Mini XLR connector for GPI remote control</li> <li>• 1x D-Sub(9 Pin) for RS-422 or RS-232 either one</li> <li>• 1x IEEE-1394 Port for connection to PC, MAC and HDV device.</li> <li>• 1x Phone plugs for audio monitor output</li> </ul>
<b>Video Input</b>	<ul style="list-style-type: none"> <li>• HD (1080i/50 - 1080/59.94i – 720p/50 – 720/59.94p)</li> <li>• SD (480/59.94i, 576/50i)</li> </ul>
<b>HD SDI signal</b>	<p>SMPTE 292 standard complied with</p> <ul style="list-style-type: none"> <li>• Output return loss : More than 15 dB (5MHz to 750MHz) More than 10 dB (750MHz to 1.5 GHz)</li> <li>• Output level : 0.8 Vpp ± 10%</li> <li>• Rise time : Less than 270 ps</li> <li>• Fall time : Less than 270 ps</li> <li>• Difference between rise time and fall time within 100 ps</li> <li>• Alignment jitter : Less than 0.2 UI</li> <li>• Timing jitter : Less than 1.0 UI</li> <li>• Eye aperture ratio : More than 90%</li> <li>• DC offset : 0 ± 0.5V</li> <li>• Equalizer use 5C-FB cable support 100 meters</li> </ul>
<b>SD SDI signal</b>	<p>SMPTE 259M standard complied with</p> <ul style="list-style-type: none"> <li>• Output return loss : More than 15dB(5MHz to 270MHz)</li> <li>• Output level : 0.8Vpp ± 10%</li> <li>• Rise time : less than 1.5ns</li> <li>• Fall time : less than 1.5ns</li> <li>• Difference between rise time and fall time less than 0.5ns</li> <li>• Jitter less than : 0.2 UI</li> </ul>
<b>Audio</b>	<ul style="list-style-type: none"> <li>• Bandwidth 20~20KHz &lt; +/- 3dB</li> <li>• S/N Ratio &gt; 70 dB</li> <li>• THD. &lt; 0.1%</li> </ul>
<b>Operating Temperature</b>	<ul style="list-style-type: none"> <li>• 0°C to 40°C (32°F to 102°F)</li> </ul>
<b>Humidity</b>	<ul style="list-style-type: none"> <li>• 10% to 90% (non condensing)</li> </ul>
<b>Dimension &amp; Weight</b>	<ul style="list-style-type: none"> <li>• 440mm (W) x 289mm (D) x 49mm (H) / 3.7Kgs</li> </ul>
<b>Power</b>	<ul style="list-style-type: none"> <li>• Input AC 100 ~ 240V Switching Adaptor, Output DC 12V / 3A</li> </ul>

## Service & Support

It is our goal to make your products ownership a satisfying experience. Our supporting staff is available to assist you in setting up and operating your system. Please refer to our web site [www.datavideo-tek.com](http://www.datavideo-tek.com) for answers to common questions, support requests or contact your local office below.

Datavideo Global Website: [www.datavideo-tek.com](http://www.datavideo-tek.com)

### Datavideo Corporation

Tel: +1 562 696 2324	Fax: +1 562-698-6930	E-Mail: <a href="mailto:contactus@datavideo.us">contactus@datavideo.us</a>
----------------------	----------------------	--

### Datavideo Technologies Europe BV

Tel: +31-30-261-96-56	Fax: +31-30 261-96-57	E-Mail: <a href="mailto:service@datavideo.nl">service@datavideo.nl</a>
-----------------------	-----------------------	--

### Datavideo UK Limited

Tel: +44 1457 851 000	Fax: +44 1457 850 964	E-Mail: <a href="mailto:sales@datavideo.co.uk">sales@datavideo.co.uk</a>
-----------------------	-----------------------	--

### Datavideo Technologies Co., Ltd

Tel: +886 2 8227 2888	Fax: +886-2-8227-2777	E-mail: <a href="mailto:service@datavideo.com.tw">service@datavideo.com.tw</a>
-----------------------	-----------------------	--

### Datavideo Technologies China Co., Ltd

Tel: +86 21-5603 6599	Fax: +86 21-5603 6770	E-mail: <a href="mailto:service@datavideo.cn">service@datavideo.cn</a>
-----------------------	-----------------------	--

### Datavideo Technologies (S) PTE LTD

Tel: +65-6749 6866	Fax: +65-6749 3266	E-mail: <a href="mailto:service@datavideo.sg">service@datavideo.sg</a>
--------------------	--------------------	--

### Datavideo HK Limited.

Tel: +852 2833 1981	Fax: +852-2833-9916	E-mail: <a href="mailto:info@datavideo.com.hk">info@datavideo.com.hk</a>
---------------------	---------------------	--

### Datavideo France

Tel: +33 1 60 37 02 46	Fax: +33 1 60 37 67 32	E-Mail: <a href="mailto:jean-marie.huet@datavideo.fr">jean-marie.huet@datavideo.fr</a>
------------------------	------------------------	--

### Datavideo India

Tel: +91 120 4309120	Fax: +91 120 4309121	E-Mail: <a href="mailto:sales@datavideo.in">sales@datavideo.in</a>
----------------------	----------------------	--

All the trademarks are the properties of their respective owners.  
Datavideo Technologies Co., Ltd. All rights reserved 2018